

---

**Product Name: Integrin beta 1 Rabbit Monoclonal Antibody****Catalog #: AMRe86236**

For research use only.

**Summary**

|                      |  |
|----------------------|--|
| <b>Description</b>   | Recombinant rabbit monoclonal antibody   |
| <b>Host</b>          | Rabbit   |
| <b>Application</b>   | WB,IHC   |
| <b>Reactivity</b>    | Human  |
| <b>Conjugation</b>   | Unconjugated   |
| <b>Modification</b>  | Unmodified   |
| <b>Isotype</b>       | IgG  |
| <b>Clonality</b>     | Monoclonal   |
| <b>Form</b>          | Liquid   |
| <b>Concentration</b> | 0.5mg/ml. The concentration of this product may be batch-dependent.  |
| <b>Storage</b>       | Aliquot and store at -20°C (valid for 12 months). Avoid freeze/thaw cycles.  |
| <b>Shipping</b>      | Ice bags   |
| <b>Buffer</b>        | Supplied in 50mM Tris-Glycine(pH 7.4), 0.15M NaCl, 40% Glycerol, 0.01% sodium azide and 0.05% protective protein. Stable for 12 months from date of receipt. |
| <b>Purification</b>  | Affinity Purification  |

**Application**

|                         |   |
|-------------------------|---|
| <b>Dilution Ratio</b>   | WB 1:500-1:2000,IHC 1:100-1:200               |
| <b>Molecular Weight</b> | Calculated MW:88 kDa; Observed MW:120-160 kDa |

**Antigen Information**

|                          |  |
|--------------------------|--|
| <b>Gene Name</b>         | Integrin beta 1                                |
| <b>Alternative Names</b> | CD29; FNRB; MDF2; VLAB; GPIIA; MSK12; VLA-BETA |
| <b>Gene ID</b>           | 3688   |
| <b>SwissProt ID</b>      | P05556   |
| <b>Immunogen</b>         | A synthetic peptide of human Integrin beta 1   |

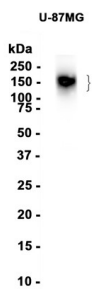
**Background**

Integrins are heterodimeric proteins made up of alpha and beta subunits. At least 18 alpha and 8 beta subunits have been described in mammals. Integrin family members are membrane receptors involved in cell adhesion and recognition in a variety

of processes including embryogenesis, hemostasis, tissue repair, immune response and metastatic diffusion of tumor cells. This gene encodes a beta subunit. Multiple alternatively spliced transcript variants which encode different protein isoforms have been found for this gene. [provided by RefSeq, Jul 2008]

## Research Area

## Image Data



Western blot analysis of extracts from HeLa cells using Integrin beta 1 Rabbit Monoclonal Antibody at 1:1000.