
Product Name: Apolipoprotein CI Rabbit Monoclonal Antibody**Catalog #: AMRe86235**

For research use only.

Summary

Description	Recombinant rabbit monoclonal antibody
Host	Rabbit
Application	WB,IHC,IP
Reactivity	Human
Conjugation	Unconjugated
Modification	Unmodified
Isotype	IgG
Clonality	Monoclonal
Form	Liquid
Concentration	1.7mg/ml. The concentration of this product may be batch-dependent.
Storage	Aliquot and store at -20°C (valid for 12 months). Avoid freeze/thaw cycles.
Shipping	Ice bags
Buffer	Supplied in 50mM Tris-Glycine(pH 7.4), 0.15M NaCl, 40% Glycerol, 0.01% sodium azide and 0.05% protective protein. Stable for 12 months from date of receipt.
Purification	Affinity Purification

Application

Dilution Ratio	WB 1:500-1:2000,IHC 1:200-1:1000,IP 1:20-1:50
Molecular Weight	Calculated MW:9 kDa; Observed MW:6 kDa

Antigen Information

Gene Name	Apolipoprotein CI
Alternative Names	Apo-CI; ApoC-I; apo-CIB; apoC-IB
Gene ID	341
SwissProt ID	P02654
Immunogen	Recombinant protein of human Apolipoprotein CI

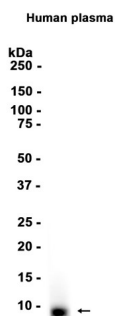
Background

This gene encodes a member of the apolipoprotein C1 family. This gene is expressed primarily in the liver, and it is activated when monocytes differentiate into macrophages. The encoded protein plays a central role in high density lipoprotein (HDL)

and very low density lipoprotein (VLDL) metabolism. This protein has also been shown to inhibit cholesteryl ester transfer protein in plasma. A pseudogene of this gene is located 4 kb downstream in the same orientation, on the same chromosome. This gene is mapped to chromosome 19, where it resides within a apolipoprotein gene cluster. Alternative splicing and the use of alternative promoters results in multiple transcript variants. [provided by RefSeq, Sep 2016]

Research Area

Image Data



Western blot analysis of extracts from Human plasma tissue using Apolipoprotein CI Rabbit Monoclonal Antibody at 1:3000.