

Product Name: DRIP130 Rabbit Monoclonal Antibody**Catalog #: AMRe86233**

For research use only.

Summary

Description	Recombinant rabbit monoclonal antibody
Host	Rabbit
Application	WB,IHC,ICC/IF
Reactivity	Human,Mouse,Rat
Conjugation	Unconjugated
Modification	Unmodified
Isotype	IgG
Clonality	Monoclonal
Form	Liquid
Concentration	0.5mg/ml. The concentration of this product may be batch-dependent.
Storage	Aliquot and store at -20°C (valid for 12 months). Avoid freeze/thaw cycles.
Shipping	Ice bags
Buffer	Supplied in 50mM Tris-Glycine(pH 7.4), 0.15M NaCl, 40% Glycerol, 0.01% sodium azide and 0.05% protective protein. Stable for 12 months from date of receipt.
Purification	Affinity Purification

Application

Dilution Ratio	WB 1:500-1:2000,IHC 1:100-1:200,ICC/IF 1:500-1:1000
Molecular Weight	Calculated MW:157 kDa; Observed MW:130 kDa

Antigen Information

Gene Name	DRIP130
Alternative Names	SUR2; CRSP3; MRT18; SUR-2; ARC130; CRSP130; CRSP133; DRIP130
Gene ID	9439
SwissProt ID	Q9ULK4
Immunogen	A synthetic peptide of human DRIP130

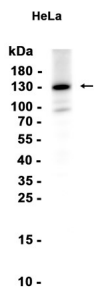
Background

The activation of gene transcription is a multistep process that is triggered by factors that recognize transcriptional enhancer sites in DNA. These factors work with co-activators to direct transcriptional initiation by the RNA polymerase II apparatus. The

protein encoded by this gene is a subunit of the CRSP (cofactor required for SP1 activation) complex, which, along with TFIID, is required for efficient activation by SP1. This protein is also a component of other multisubunit complexes e.g. thyroid hormone receptor-(TR-) associated proteins which interact with TR and facilitate TR function on DNA templates in conjunction with initiation factors and cofactors. This protein also acts as a metastasis suppressor. Several alternatively spliced transcript variants encoding different isoforms have been described for this gene. [provided by RefSeq, Jul 2012]

Research Area

Image Data



Western blot analysis of extracts from HeLa cells using DRIP130 Rabbit Monoclonal Antibody at 1:1000.