

---

**Product Name: Kappa Light chain Rabbit Monoclonal Antibody****Catalog #: AMRe86226**

For research use only.

**Summary**

<b>Description</b>	Recombinant rabbit monoclonal antibody
<b>Host</b>	Rabbit
<b>Application</b>	WB,IHC,ICC/IF
<b>Reactivity</b>	Human
<b>Conjugation</b>	Unconjugated
<b>Modification</b>	Unmodified
<b>Isotype</b>	IgG
<b>Clonality</b>	Monoclonal
<b>Form</b>	Liquid
<b>Concentration</b>	0.5mg/ml. The concentration of this product may be batch-dependent.
<b>Storage</b>	Aliquot and store at -20°C (valid for 12 months). Avoid freeze/thaw cycles.
<b>Shipping</b>	Ice bags
<b>Buffer</b>	Supplied in 50mM Tris-Glycine(pH 7.4), 0.15M NaCl, 40% Glycerol, 0.01% sodium azide and 0.05% protective protein. Stable for 12 months from date of receipt.
<b>Purification</b>	Affinity Purification

**Application**

<b>Dilution Ratio</b>	WB 1:1000-1:5000,IHC 1:200-1:500,ICC/IF 1:200-1:500
<b>Molecular Weight</b>	Calculated MW:25 kDa; Observed MW:25 kDa

**Antigen Information**

<b>Gene Name</b>	Kappa Light chain
<b>Alternative Names</b>	HCAK1; Ig kappa chain C region; IGKC; IMMUNOGLOBULIN InV; Km
<b>Gene ID</b>	3514
<b>SwissProt ID</b>	P01834
<b>Immunogen</b>	Full length native protein

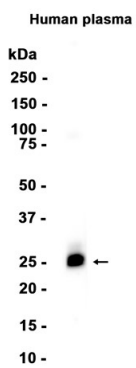
**Background**

Constant region of immunoglobulin light chains. Immunoglobulins, also known as antibodies, are membrane-bound or secreted glycoproteins produced by B lymphocytes. In the recognition phase of humoral immunity, the membrane-bound

immunoglobulins serve as receptors which, upon binding of a specific antigen, trigger the clonal expansion and differentiation of B lymphocytes into immunoglobulins-secreting plasma cells.

## Research Area

## Image Data



Western blot analysis of extracts from Human plasma tissue using Kappa Light chain Rabbit Monoclonal Antibody at 1:1000.