
Product Name: PPA2 Rabbit Monoclonal Antibody**Catalog #: AMRe86222**

For research use only.

Summary

Description	Recombinant rabbit monoclonal antibody
Host	Rabbit
Application	WB,IHC,IP
Reactivity	Human,Mouse,Rat
Conjugation	Unconjugated
Modification	Unmodified
Isotype	IgG
Clonality	Monoclonal
Form	Liquid
Concentration	0.5mg/ml. The concentration of this product may be batch-dependent.
Storage	Aliquot and store at -20°C (valid for 12 months). Avoid freeze/thaw cycles.
Shipping	Ice bags
Buffer	Supplied in 50mM Tris-Glycine(pH 7.4), 0.15M NaCl, 40% Glycerol, 0.01% sodium azide and 0.05% protective protein. Stable for 12 months from date of receipt.
Purification	Affinity Purification

Application

Dilution Ratio	WB 1:1000-1:5000,IHC 1:50-1:200,IP 1:10-1:100
Molecular Weight	Calculated MW:38 kDa; Observed MW:35 kDa

Antigen Information

Gene Name	PPA2
Alternative Names	SCFI; SCFAI; HSPC124; SID6-306
Gene ID	27068
SwissProt ID	Q9H2U2
Immunogen	A synthetic peptide of human PPA2

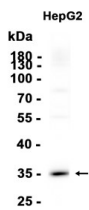
Background

The protein encoded by this gene is localized to the mitochondrion, is highly similar to members of the inorganic pyrophosphatase (PPase) family, and contains the signature sequence essential for the catalytic activity of PPase. PPases

catalyze the hydrolysis of pyrophosphate to inorganic phosphate, which is important for the phosphate metabolism of cells. Alternate transcriptional splice variants, encoding different isoforms, have been characterized. [provided by RefSeq, Jul 2008]

Research Area

Image Data



Western blot analysis of extracts from HepG2 cells using PPA2 Rabbit Monoclonal Antibody at 1:1000.