

---

**Product Name: Glutamate Receptor 1 Rabbit Monoclonal Antibody****Catalog #: AMRe86218**

For research use only.

**Summary**

<b>Description</b>	Recombinant rabbit monoclonal antibody
<b>Host</b>	Rabbit
<b>Application</b>	WB,IHC,IP
<b>Reactivity</b>	Human,Mouse,Rat
<b>Conjugation</b>	Unconjugated
<b>Modification</b>	Unmodified
<b>Isotype</b>	IgG
<b>Clonality</b>	Monoclonal
<b>Form</b>	Liquid
<b>Concentration</b>	0.5mg/ml. The concentration of this product may be batch-dependent.
<b>Storage</b>	Aliquot and store at -20°C (valid for 12 months). Avoid freeze/thaw cycles.
<b>Shipping</b>	Ice bags
<b>Buffer</b>	Supplied in 50mM Tris-Glycine(pH 7.4), 0.15M NaCl, 40% Glycerol, 0.01% sodium azide and 0.05% protective protein. Stable for 12 months from date of receipt.
<b>Purification</b>	Affinity Purification

**Application**

<b>Dilution Ratio</b>	WB 1:500-1:2000,IHC 1:50-1:200,IP 1:20-1:50
<b>Molecular Weight</b>	Calculated MW:102 kDa; Observed MW:102 kDa

**Antigen Information**

<b>Gene Name</b>	Glutamate Receptor 1
<b>Alternative Names</b>	Glr1; Glr-1; GluA1; GluRA; Glur1; HIPA1; GluR-A; Glur-1; gluR-K1; 2900051M01Rik
<b>Gene ID</b>	14799
<b>SwissProt ID</b>	P23818
<b>Immunogen</b>	Recombinant protein of mouse Glutamate Receptor 1

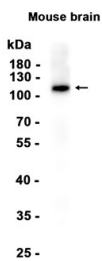
**Background**

Ionotropic glutamate receptor. L-glutamate acts as an excitatory neurotransmitter at many synapses in the central nervous system. Binding of the excitatory neurotransmitter L-glutamate induces a conformation change, leading to the opening of the

cation channel, and thereby converts the chemical signal to an electrical impulse. The receptor then desensitizes rapidly and enters a transient inactive state, characterized by the presence of bound agonist. In the presence of CACNG4 or CACNG7 or CACNG8, shows resensitization which is characterized by a delayed accumulation of current flux upon continued application of glutamate.

## Research Area

## Image Data



Western blot analysis of extracts from Mouse brain tissue using Glutamate Receptor 1 Rabbit Monoclonal Antibody at 1:1000.