

Product Name: CD4 Rabbit Monoclonal Antibody**Catalog #: AMRe86209**

For research use only.

Summary

Description	Recombinant rabbit monoclonal antibody
Host	Rabbit
Application	WB,IHC,FC,IP
Reactivity	Mouse,Rat
Conjugation	Unconjugated
Modification	Unmodified
Isotype	IgG
Clonality	Monoclonal
Form	Liquid
Concentration	0.15mg/ml. The concentration of this product may be batch-dependent.
Storage	Aliquot and store at -20°C (valid for 12 months). Avoid freeze/thaw cycles.
Shipping	Ice bags
Buffer	Supplied in 50mM Tris-Glycine(pH 7.4), 0.15M NaCl, 40% Glycerol, 0.01% sodium azide and 0.05% protective protein. Stable for 12 months from date of receipt.
Purification	Affinity Purification

Application

Dilution Ratio	WB 1:500-1:2000,IHC 1:500-1:2000,FC 1:20-1:50,IP 1:20-1:50
Molecular Weight	Calculated MW:51 kDa; Observed MW:51 kDa

Antigen Information

Gene Name	CD4
Alternative Names	L3T4; Ly-4
Gene ID	12504, 24932
SwissProt ID	P06332, P05540
Immunogen	A synthetic peptide of mouse CD4

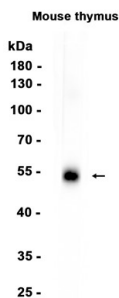
Background

Predicted to enable several functions, including interleukin-16 binding activity; interleukin-16 receptor activity; and protein homodimerization activity. Involved in helper T cell enhancement of adaptive immune response. Acts upstream of or within

several processes, including defense response to Gram-negative bacterium; positive regulation of calcium-mediated signaling; and positive regulation of peptidyl-tyrosine phosphorylation. Located in endoplasmic reticulum; external side of plasma membrane; and membrane raft. Is expressed in several structures, including alimentary system; brain; genitourinary system; hemolymphoid system; and liver and biliary system. Used to study type 1 diabetes mellitus. Human ortholog(s) of this gene implicated in immunodeficiency 79. Orthologous to human CD4 (CD4 molecule). [provided by Alliance of Genome Resources, Apr 2022]

Research Area

Image Data



Western blot analysis of extracts from Mouse thymus tissue using CD4 Rabbit Monoclonal Antibody at 1:1000.