

Product Name: beta 2 Microglobulin Rabbit Monoclonal Antibody
Catalog #: AMRe86201

Summary

Production Name	beta 2 Microglobulin Rabbit Monoclonal Antibody
Description	Rabbit Monoclonal antibody
Host	Rabbit
Application	WB, ICC/IF, FC, IP
Reactivity	Human,Mouse,Rat

Performance

Conjugation	Unconjugated
Modification	Unmodified
Isotype	IgG
Clonality	Monoclonal
Form	Liquid
Storage	Store at 4°C short term. Aliquot and store at -20°C long term. Avoid freeze/thaw cycles.
Buffer	Supplied in 50mM Tris-Glycine(pH 7.4), 0.15M NaCl, 40% Glycerol, 0.01% sodium azide and 0.05% BSA. Stable for 12 months from date of receipt.
Purification	Affinity Purification

Immunogen

Gene Name	beta 2 Microglobulin
Alternative Names	IMD43
Gene ID	567
SwissProt ID	P61769.

Application

Dilution Ratio	WB: 1:1000-1:5000 ICC/IF: 1:100-1:200 FC: 1:20-1:50 IP: 1:20-1:50
Molecular Weight	Calculated MW:14 kDa; Observed MW:14 kDa

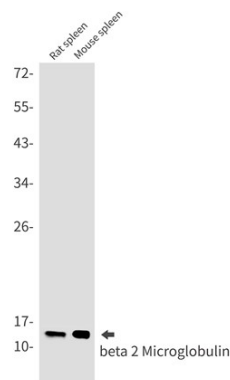
Product Name: beta 2 Microglobulin Rabbit Monoclonal Antibody
Catalog #: AMRe86201

Background

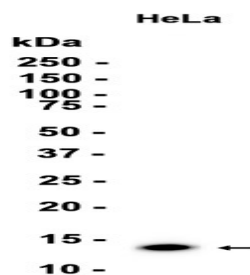
This gene encodes a serum protein found in association with the major histocompatibility complex (MHC) class I heavy chain on the surface of nearly all nucleated cells. The protein has a predominantly beta-pleated sheet structure that can form amyloid fibrils in some pathological conditions. The encoded antimicrobial protein displays antibacterial activity in amniotic fluid. A mutation in this gene has been shown to result in hypercatabolic hypoproteinemia.[provided by RefSeq, Aug 2014]

Research Area

Image Data



Western blot analysis of beta 2 Microglobulin in rat spleen, mouse spleen lysates using beta 2 Microglobulin antibody(1:1000 diluted).



Western blot analysis of extracts from HeLa cells using AMRe86201 at 1:10000.

Note

For research use only.