

---

**Product Name: PHF8 Rabbit Monoclonal Antibody****Catalog #: AMRe86186**

For research use only.

**Summary**

<b>Description</b>	Recombinant rabbit monoclonal antibody
<b>Host</b>	Rabbit
<b>Application</b>	WB
<b>Reactivity</b>	Human
<b>Conjugation</b>	Unconjugated
<b>Modification</b>	Unmodified
<b>Isotype</b>	IgG
<b>Clonality</b>	Monoclonal
<b>Form</b>	Liquid
<b>Concentration</b>	
<b>Storage</b>	Aliquot and store at -20°C (valid for 12 months). Avoid freeze/thaw cycles.
<b>Shipping</b>	Ice bags
<b>Buffer</b>	Purified antibody in PBS with 0.05% sodium azide, 0.5% protective protein and 50% glycerol.
<b>Purification</b>	Affinity Purification

**Application**

<b>Dilution Ratio</b>	WB 1:500-1:1000
<b>Molecular Weight</b>	140; 117 kD

**Antigen Information**

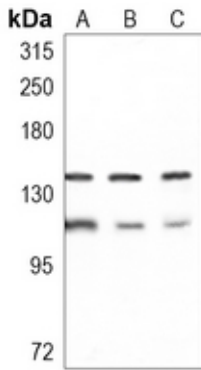
<b>Gene Name</b>	PHF8
<b>Alternative Names</b>	KIAA1111; ZNF422; Histone lysine demethylase PHF8; PHD finger protein 8; PHF8
<b>Gene ID</b>	23133.0
<b>SwissProt ID</b>	Q9UPP1
<b>Immunogen</b>	KLH-conjugated synthetic peptide encompassing a sequence within human PHF8. The exact sequence is proprietary.

**Background**

Recombinant rabbit monoclonal antibody to PHF8

## Research Area

## Image Data



Western blot analysis of PHF8 expression in HEK293T (A), HepG2 (B), K562 (C) whole cell lysates. (Predicted band size: 117; 113; 105; 106; 98 kD; Observed band size: 140; 117 kD)