
Product Name: RGMA Rabbit Monoclonal Antibody**Catalog #: AMRe86183**

For research use only.

Summary

Description	Recombinant rabbit monoclonal antibody
Host	Rabbit
Application	WB
Reactivity	Human
Conjugation	Unconjugated
Modification	Unmodified
Isotype	IgG
Clonality	Monoclonal
Form	Liquid
Concentration	
Storage	Aliquot and store at -20°C (valid for 12 months). Avoid freeze/thaw cycles.
Shipping	Ice bags
Buffer	Purified antibody in PBS with 0.05% sodium azide, 0.5% protective protein and 50% glycerol.
Purification	Affinity Purification

Application

Dilution Ratio	WB 1:500-1:1000
Molecular Weight	37 kD

Antigen Information

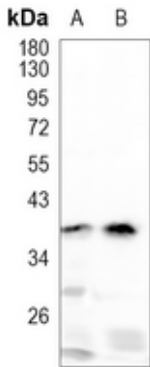
Gene Name	RGMA
Alternative Names	RGM; Repulsive guidance molecule A; RGM domain family member A; RGMA
Gene ID	56963.0
SwissProt ID	Q96B86
Immunogen	KLH-conjugated synthetic peptide encompassing a sequence within human RGMA. The exact sequence is proprietary.

Background

Recombinant rabbit monoclonal antibody to RGMA

Research Area

Image Data



Western blot analysis of RGMA expression in HEK293T (A), H1792 (B) whole cell lysates. (Predicted band size: 49 kD; Observed band size: 37 kD)