
Product Name: KLRG1 Rabbit Monoclonal Antibody**Catalog #: AMRe86182**

For research use only.

Summary

Description	Recombinant rabbit monoclonal antibody
Host	Rabbit
Application	WB
Reactivity	Human
Conjugation	Unconjugated
Modification	Unmodified
Isotype	IgG
Clonality	Monoclonal
Form	Liquid
Concentration	
Storage	Aliquot and store at -20°C (valid for 12 months). Avoid freeze/thaw cycles.
Shipping	Ice bags
Buffer	Purified antibody in PBS with 0.05% sodium azide, 0.5% protective protein and 50% glycerol.
Purification	Affinity Purification

Application

Dilution Ratio	WB 1:500-1:1000
Molecular Weight	38 kD

Antigen Information

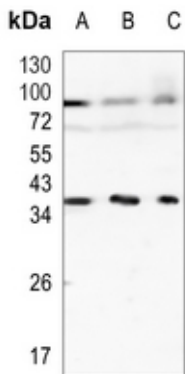
Gene Name	KLRG1 CLEC15A; MAFA; MAFAL; Killer cell lectin-like receptor subfamily G member 1; C-type lectin
Alternative Names	domain family 15 member A; ITIM-containing receptor MAFA-L; MAFA-like receptor; Mast cell function-associated antigen; KLRG1
Gene ID	10219.0
SwissProt ID	Q96E93
Immunogen	KLH-conjugated synthetic peptide encompassing a sequence within human KLRG1. The exact sequence is proprietary.

Background

Recombinant rabbit monoclonal antibody to KLRG1

Research Area

Image Data



Western blot analysis of KLRG1 expression in HEK293T (A), A549 (B), PC3 (C) whole cell lysates. (Predicted band size: 21 kD; Observed band size: 38 kD)