

---

**Product Name: PABPN1 Rabbit Monoclonal Antibody****Catalog #: AMRe85902**

For research use only.

**Summary**

<b>Description</b>	Recombinant rabbit monoclonal antibody
<b>Host</b>	Rabbit
<b>Application</b>	WB,IHC,ICC,IP
<b>Reactivity</b>	Human,Mouse
<b>Conjugation</b>	Unconjugated
<b>Modification</b>	Unmodified
<b>Isotype</b>	IgG
<b>Clonality</b>	Monoclonal
<b>Form</b>	Liquid
<b>Concentration</b>	
<b>Storage</b>	Aliquot and store at -20°C (valid for 12 months). Avoid freeze/thaw cycles.
<b>Shipping</b>	Ice bags
<b>Buffer</b>	Purified antibody in TBS with 0.05% sodium azide,0.05%protective protein and 50% glycerol.
<b>Purification</b>	Affinity Purification

**Application**

<b>Dilution Ratio</b>	WB 1:500-1:1000,IHC 1:50-1:100,ICC 1:50-1:200,IP 1:10-1:20
<b>Molecular Weight</b>	Calculated MW: 33 kDa; Observed MW: 50 kDa

**Antigen Information**

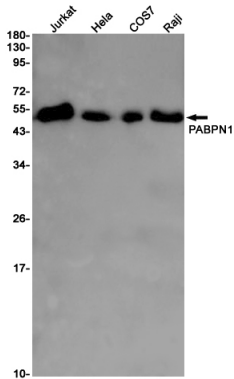
<b>Gene Name</b>	PABPN1
<b>Alternative Names</b>	OPMD; PAB2; PABII; PABP2; PABP-2
<b>Gene ID</b>	8106.0
<b>SwissProt ID</b>	Q86U42
<b>Immunogen</b>	A synthetic peptide of human PABPN1

**Background**

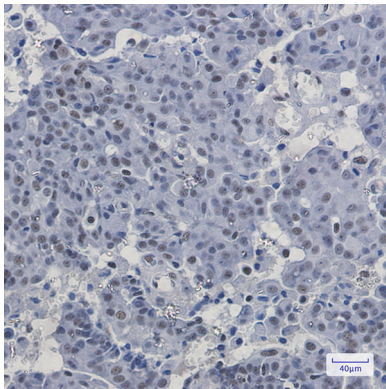
Involved in the 3'-end formation of mRNA precursors (pre-mRNA) by the addition of a poly(A) tail of 200-250 nt to the upstream cleavage product. Stimulates poly(A) polymerase (PAPOLA) conferring processivity on the poly(A) tail elongation reaction and controls also the poly(A) tail length. Increases the affinity of poly(A) polymerase for RNA.

## Research Area

## Image Data



Western blot analysis of PABPN1 in Jurkat, HeLa, COS7, Raji lysates using PABPN1 antibody.



Immunohistochemistry analysis of paraffin-embedded Human breast cancer using PABPN1 antibody. High-pressure and temperature Sodium Citrate pH 6.0 was used for antigen retrieval.