

Product Name: S6K2 Rabbit Monoclonal Antibody**Catalog #: AMRe85899**

For research use only.

Summary

Description	Recombinant rabbit monoclonal antibody
Host	Rabbit
Application	WB,IHC,ICC
Reactivity	Human,Mouse,Rat
Conjugation	Unconjugated
Modification	Unmodified
Isotype	IgG
Clonality	Monoclonal
Form	Liquid
Concentration	0.63mg/ml. The concentration of this product may be batch-dependent.
Storage	Aliquot and store at -20°C (valid for 12 months). Avoid freeze/thaw cycles.
Shipping	Ice bags
Buffer	Purified antibody in TBS with 0.05% sodium azide,0.05%protective protein and 50% glycerol.
Purification	Affinity Purification

Application

Dilution Ratio	WB 1:500-1:1000,IHC 1:50-1:100,ICC 1:50-1:200
Molecular Weight	Calculated MW: 53 kDa; Observed MW: 53 kDa

Antigen Information

Gene Name	S6K2 RPS6KB2; STK14B; Ribosomal protein S6 kinase beta-2; S6K-beta-2; S6K2; 70 kDa ribosomal
Alternative Names	protein S6 kinase 2; P70S6K2; p70-S6K 2; S6 kinase-related kinase; SRK; Serine/threonine-protein kinase 14B; p70 ribosomal S6 kinase beta; S6K-beta; p70
Gene ID	6199.0
SwissProt ID	Q9UBS0
Immunogen	Recombinant protein of human P70 S6 Kinase beta

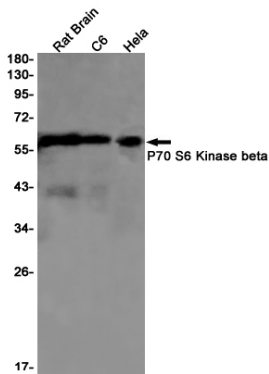
Background

Phosphorylates specifically ribosomal protein S6.

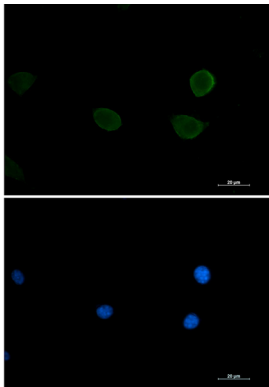
Research Area

PI3K-Akt signaling pathway

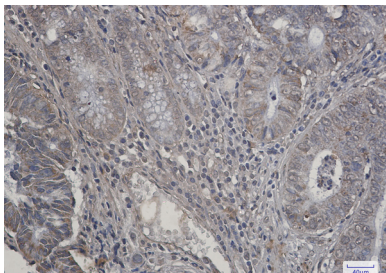
Image Data



Western blot analysis of P70 S6 Kinase beta in rat Brain, C6, HeLa lysates using P70 S6 Kinase beta antibody.



Immunocytochemistry analysis of S6K2 (green) in 3T3 using S6K2 antibody, and DAPI(blue).



Immunohistochemistry analysis of paraffin-embedded Human colon cancer tissue using P70 S6 Kinase beta antibody. High-pressure and temperature Sodium Citrate pH 6.0 was used for antigen retrieval.