
Product Name: p27 Kip 1 Rabbit Monoclonal Antibody**Catalog #: AMRe85894**

For research use only.

Summary

Description	Recombinant rabbit monoclonal antibody
Host	Rabbit
Application	WB,IHC,IP
Reactivity	Human,Mouse,Rat
Conjugation	Unconjugated
Modification	Unmodified
Isotype	IgG
Clonality	Monoclonal
Form	Liquid
Concentration	
Storage	Aliquot and store at -20°C (valid for 12 months). Avoid freeze/thaw cycles.
Shipping	Ice bags
Buffer	Purified antibody in TBS with 0.05% sodium azide,0.05%protective protein and 50% glycerol.
Purification	Affinity Purification

Application

Dilution Ratio	WB 1:500-1:1000,IHC 1:50-1:100,IP 1:10-1:20
Molecular Weight	Calculated MW: 22 kDa; Observed MW: 27 kDa

Antigen Information

Gene Name	p27 Kip 1
Alternative Names	CDKN1B; KIP1; Cyclin-dependent kinase inhibitor 1B; Cyclin-dependent kinase inhibitor p27; p27Kip1
Gene ID	1027.0
SwissProt ID	P46527
Immunogen	A synthetic peptide of human p27 KIP 1

Background

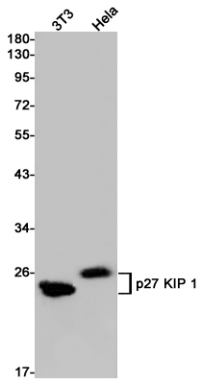
The encoded protein binds to and prevents the activation of cyclin E-CDK2 or cyclin D-CDK4 complexes, and thus controls the cell cycle progression at G1. The degradation of this protein, which is triggered by its CDK dependent phosphorylation and

subsequent ubiquitination by SCF complexes, is required for the cellular transition from quiescence to the proliferative state.

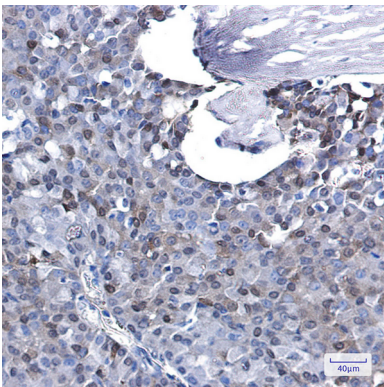
Research Area

PI3K-Akt signaling pathway

Image Data



Western blot analysis of p27 KIP 1 in 3T3, HeLa lysates using p27 Kip 1 antibody.



Immunohistochemistry analysis of paraffin-embedded Human breast cancer using p27 KIP 1 antibody. High-pressure and temperature Sodium Citrate pH 6.0 was used for antigen retrieval.