

---

**Product Name: p150 CAF1 Rabbit Monoclonal Antibody****Catalog #: AMRe85891**

For research use only.

**Summary**

<b>Description</b>	Recombinant rabbit monoclonal antibody
<b>Host</b>	Rabbit
<b>Application</b>	WB,IHC,ICC,IP
<b>Reactivity</b>	Human
<b>Conjugation</b>	Unconjugated
<b>Modification</b>	Unmodified
<b>Isotype</b>	IgG
<b>Clonality</b>	Monoclonal
<b>Form</b>	Liquid
<b>Concentration</b>	0.63mg/ml. The concentration of this product may be batch-dependent.
<b>Storage</b>	Aliquot and store at -20°C (valid for 12 months). Avoid freeze/thaw cycles.
<b>Shipping</b>	Ice bags
<b>Buffer</b>	Purified antibody in TBS with 0.05% sodium azide,0.05%protective protein and 50% glycerol.
<b>Purification</b>	Affinity Purification

**Application**

<b>Dilution Ratio</b>	WB 1:500-1:1000,IHC 1:50-1:100,ICC 1:50-1:200,IP 1:10-1:20
<b>Molecular Weight</b>	Calculated MW: 107 kDa; Observed MW: 150 kDa

**Antigen Information**

<b>Gene Name</b>	p150 CAF1
<b>Alternative Names</b>	CHAF1A; CAF; CAF1P150; Chromatin assembly factor 1 subunit A; CAF-1 subunit A; Chromatin assembly factor I p150 subunit; CAF-I 150 kDa subunit; CAF-I p150; hp150
<b>Gene ID</b>	10036.0
<b>SwissProt ID</b>	Q13111
<b>Immunogen</b>	A synthetic peptide of human p150 CAF1

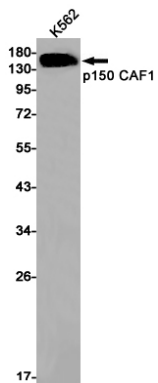
**Background**

Core component of the CAF-1 complex, a complex thought to mediate chromatin assembly in DNA replication and DNA repair. Assembles histone octamers onto replicating DNA in vitro. CAF-1 performs the first step of the nucleosome assembly process,

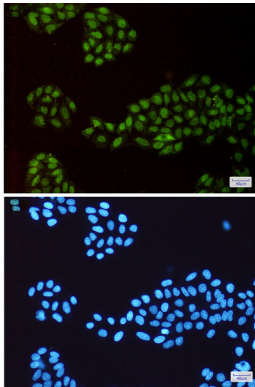
bringing newly synthesized histones H3 and H4 to replicating DNA; histones H2A/H2B can bind to this chromatin precursor subsequent to DNA replication to complete the histone octamer.

## Research Area

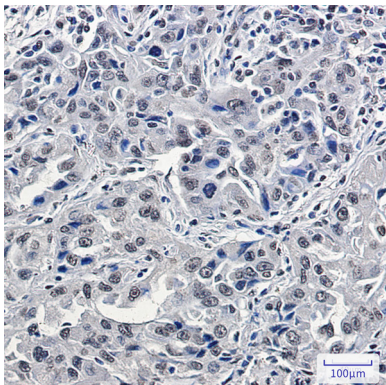
## Image Data



Western blot analysis of p150 CAF1 in K562 lysates using p150 CAF1 antibody.



Immunocytochemistry analysis of p150 CAF1 (green) in HeLa using p150 CAF1 antibody, and DAPI (blue)



Immunohistochemistry analysis of paraffin-embedded Human lung cancer using p150 CAF1/CAF antibody. High-pressure and temperature Sodium Citrate pH 6.0 was used for antigen retrieval.