

Product Name: NXF1 Rabbit Monoclonal Antibody**Catalog #: AMRe85882**

For research use only.

Summary

Description	Recombinant rabbit monoclonal antibody
Host	Rabbit
Application	WB,IHC,ICC,IP
Reactivity	Human
Conjugation	Unconjugated
Modification	Unmodified
Isotype	IgG
Clonality	Monoclonal
Form	Liquid
Concentration	0.63mg/ml. The concentration of this product may be batch-dependent.
Storage	Aliquot and store at -20°C (valid for 12 months). Avoid freeze/thaw cycles.
Shipping	Ice bags
Buffer	Purified antibody in TBS with 0.05% sodium azide,0.05%protective protein and 50% glycerol.
Purification	Affinity Purification

Application

Dilution Ratio	WB 1:500-1:1000,IHC 1:50-1:100,ICC 1:50-1:200,IP 1:10-1:20
Molecular Weight	Calculated MW: 70 kDa; Observed MW: 70 kDa

Antigen Information

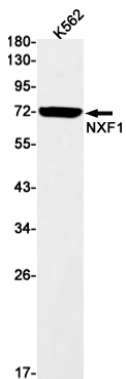
Gene Name	NXF1
Alternative Names	DmNXF1; MEX67; Mex67p; Mvb1; NXF1; Sbr; TAP
Gene ID	10482.0
SwissProt ID	Q9UBU9
Immunogen	A synthetic peptide of human NXF1

Background

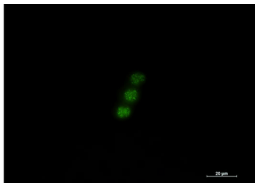
Involved in the nuclear export of mRNA species bearing retroviral constitutive transport elements (CTE) and in the export of mRNA from the nucleus to the cytoplasm. The NXF1-NXT1 heterodimer is involved in the export of HSP70 mRNA in conjunction with THOC4 and THOC5.

Research Area

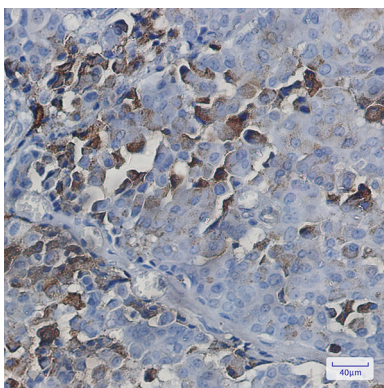
Image Data



Western blot analysis of NXF1 in K562 lysates using NXF1 antibody.



Immunocytochemistry analysis of NXF1 (green) in Jurkat using NXF1 antibody, and DAPI (blue).



Immunohistochemistry analysis of paraffin-embedded Human breast cancer tissue using NXF1 antibody. High-pressure and temperature Sodium Citrate pH 6.0 was used for antigen retrieval.