

---

**Product Name: SLC12A1 Rabbit Monoclonal Antibody****Catalog #: AMRe85861**

For research use only.

**Summary**

<b>Description</b>	Recombinant rabbit monoclonal antibody
<b>Host</b>	Rabbit
<b>Application</b>	WB
<b>Reactivity</b>	Human
<b>Conjugation</b>	Unconjugated
<b>Modification</b>	Unmodified
<b>Isotype</b>	IgG
<b>Clonality</b>	Monoclonal
<b>Form</b>	Liquid
<b>Concentration</b>	
<b>Storage</b>	Aliquot and store at -20°C (valid for 12 months). Avoid freeze/thaw cycles.
<b>Shipping</b>	Ice bags
<b>Buffer</b>	Purified antibody in TBS with 0.05% sodium azide, 0.05% protective protein and 50% glycerol.
<b>Purification</b>	Affinity Purification

**Application**

<b>Dilution Ratio</b>	WB 1:500-1:1000
<b>Molecular Weight</b>	Calculated MW: 121 kDa; Observed MW: 150 kDa

**Antigen Information**

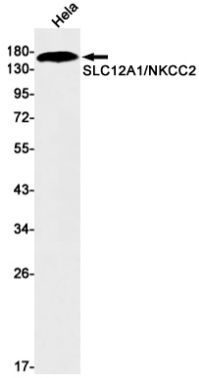
<b>Gene Name</b>	SLC12A1
<b>Alternative Names</b>	BSC1; NKCC2
<b>Gene ID</b>	6557.0
<b>SwissProt ID</b>	Q13621
<b>Immunogen</b>	Recombinant protein of human NKCC2

**Background**

Electrically silent transporter system. Mediates sodium and chloride reabsorption. Plays a vital role in the regulation of ionic balance and cell volume.

## Research Area

## Image Data



Western blot analysis of SLC12A1/NKCC2 in HeLa lysates using SLC12A1 antibody.