

---

**Product Name: Niemann Pick C2 Rabbit Monoclonal Antibody****Catalog #: AMRe85859**

For research use only.

**Summary**

<b>Description</b>	Recombinant rabbit monoclonal antibody
<b>Host</b>	Rabbit
<b>Application</b>	WB,IHC
<b>Reactivity</b>	Human,Mouse,Rat
<b>Conjugation</b>	Unconjugated
<b>Modification</b>	Unmodified
<b>Isotype</b>	IgG
<b>Clonality</b>	Monoclonal
<b>Form</b>	Liquid
<b>Concentration</b>	
<b>Storage</b>	Aliquot and store at -20°C (valid for 12 months). Avoid freeze/thaw cycles.
<b>Shipping</b>	Ice bags
<b>Buffer</b>	Purified antibody in TBS with 0.05% sodium azide,0.05%protective protein and 50% glycerol.
<b>Purification</b>	Affinity Purification

**Application**

<b>Dilution Ratio</b>	WB 1:500-1:1000,IHC 1:50-1:100
<b>Molecular Weight</b>	Calculated MW: 17 kDa; Observed MW: 17 kDa

**Antigen Information**

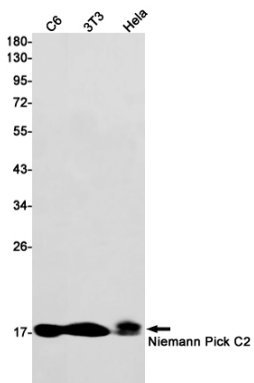
<b>Gene Name</b>	Niemann Pick C2
<b>Alternative Names</b>	HE1; EDDM1
<b>Gene ID</b>	10577.0
<b>SwissProt ID</b>	P61916
<b>Immunogen</b>	Recombinant protein of human Niemann Pick C2

**Background**

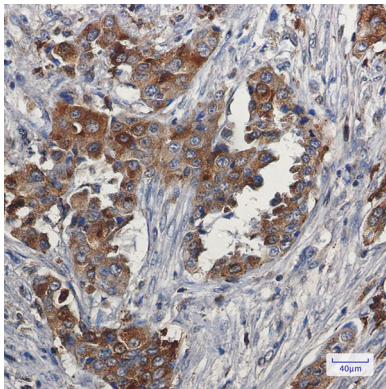
This gene encodes a protein containing a lipid recognition domain. The encoded protein may function in regulating the transport of cholesterol through the late endosomal/lysosomal system. Mutations in this gene have been associated with Niemann-Pick disease, type C2 and frontal lobe atrophy. [provided by RefSeq, Jul 2008]

## Research Area

## Image Data



Western blot analysis of Niemann Pick C2 in C6, 3T3, HeLa lysates using Niemann Pick C2 antibody.



Immunohistochemistry analysis of paraffin-embedded Human lung cancer using Niemann Pick C2 antibody. High-pressure and temperature Sodium Citrate pH 6.0 was used for antigen retrieval.