

Product Name: Neurofilament Heavy Polypeptide Rabbit Monoclonal Antibody**Catalog #: AMRe85851**

For research use only.

Summary

Description	Recombinant rabbit monoclonal antibody
Host	Rabbit
Application	WB,IHC,ICC
Reactivity	Human,Mouse,Rat
Conjugation	Unconjugated
Modification	Unmodified
Isotype	IgG
Clonality	Monoclonal
Form	Liquid
Concentration	
Storage	Aliquot and store at -20°C (valid for 12 months). Avoid freeze/thaw cycles.
Shipping	Ice bags
Buffer	Purified antibody in TBS with 0.05% sodium azide,0.05%protective protein and 50% glycerol.
Purification	Affinity Purification

Application

Dilution Ratio	WB 1:500-1:1000,IHC 1:50-1:100,ICC 1:50-1:200
Molecular Weight	Calculated MW: 112 kDa; Observed MW: 180-220 kDa

Antigen Information

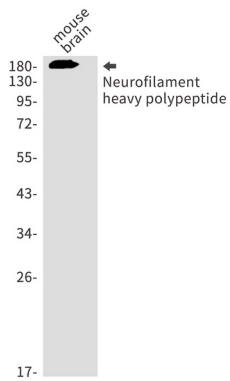
Gene Name	Neurofilament Heavy Polypeptide
Alternative Names	NEFH; KIAA0845; NFH; Neurofilament heavy polypeptide; NF-H; 200 kDa neurofilament protein; Neurofilament triplet H protein
Gene ID	4744.0
SwissProt ID	P12036
Immunogen	Recombinant protein of human Neurofilament heavy polypeptide

Background

Neurofilaments usually contain three intermediate filament proteins: L, M, and H which are involved in the maintenance of neuronal caliber. NF-H has an important function in mature axons that is not subserved by the two smaller NF proteins.

Research Area

Image Data



Western blot analysis of Neurofilament heavy polypeptide in mouse brain lysates using Neurofilament Heavy Polypeptide antibody.