

Product Name: NELFE Rabbit Monoclonal Antibody**Catalog #: AMRe85848**

For research use only.

Summary

Description	Recombinant rabbit monoclonal antibody
Host	Rabbit
Application	WB,IHC,IP
Reactivity	Human,Mouse,Rat
Conjugation	Unconjugated
Modification	Unmodified
Isotype	IgG
Clonality	Monoclonal
Form	Liquid
Concentration	
Storage	Aliquot and store at -20°C (valid for 12 months). Avoid freeze/thaw cycles.
Shipping	Ice bags
Buffer	Purified antibody in TBS with 0.05% sodium azide,0.05%protective protein and 50% glycerol.
Purification	Affinity Purification

Application

Dilution Ratio	WB 1:500-1:1000,IHC 1:50-1:100,IP 1:10-1:20
Molecular Weight	Calculated MW: 43 kDa; Observed MW: 43 kDa

Antigen Information

Gene Name	NELFE
Alternative Names	RD; RDP; RDBP; D6S45; NELF-E
Gene ID	7936.0
SwissProt ID	P18615
Immunogen	Recombinant protein of human NELFe

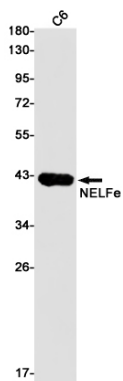
Background

Essential component of the NELF complex, a complex that negatively regulates the elongation of transcription by RNA polymerase II. The NELF complex, which acts via an association with the DSIF complex and causes transcriptional pausing, is counteracted by the P-TEFb kinase complex. The NELF complex is involved in HIV-1 latency possibly involving recruitment of

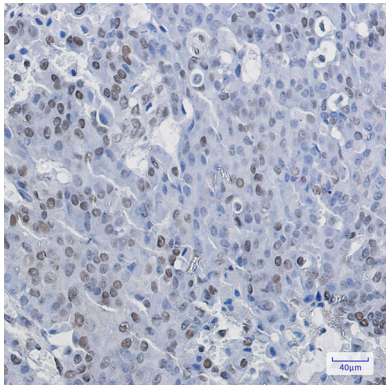
PCF11 to paused RNA polymerase II. Provides the strongest RNA binding activity of the NELF complex and may initially recruit the NELF complex to RNA. Binds to the HIV-1 TAR RNA which is located in the long terminal repeat (LTR) of HIV-1.

Research Area

Image Data



Western blot analysis of NELFe in C6 lysates using NELFE antibody.



Immunohistochemistry analysis of paraffin-embedded Human breast cancer using NELFe antibody. High-pressure and temperature Sodium Citrate pH 6.0 was used for antigen retrieval.