

---

**Product Name: MYL2 Rabbit Monoclonal Antibody****Catalog #: AMRe85822**

For research use only.

**Summary**

<b>Description</b>	Recombinant rabbit monoclonal antibody
<b>Host</b>	Rabbit
<b>Application</b>	WB,IHC,IP
<b>Reactivity</b>	Mouse,Rat
<b>Conjugation</b>	Unconjugated
<b>Modification</b>	Unmodified
<b>Isotype</b>	IgG
<b>Clonality</b>	Monoclonal
<b>Form</b>	Liquid
<b>Concentration</b>	
<b>Storage</b>	Aliquot and store at -20°C (valid for 12 months). Avoid freeze/thaw cycles.
<b>Shipping</b>	Ice bags
<b>Buffer</b>	Purified antibody in TBS with 0.05% sodium azide,0.05%protective protein and 50% glycerol.
<b>Purification</b>	Affinity Purification

**Application**

<b>Dilution Ratio</b>	WB 1:500-1:1000,IHC 1:50-1:100,IP 1:10-1:20
<b>Molecular Weight</b>	Calculated MW: 19 kDa; Observed MW: 19 kDa

**Antigen Information**

<b>Gene Name</b>	MYL2
<b>Alternative Names</b>	Myosin regulatory light chain 2; ventricular/cardiac muscle isoform; MLC-2; MLC-2v
<b>Gene ID</b>	4633.0
<b>SwissProt ID</b>	P10916
<b>Immunogen</b>	A synthetic peptide of human Myosin Light Chain 2

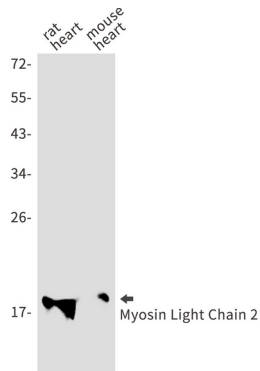
**Background**

Myosin is composed of six polypeptide chains: two identical heavy chains and two pairs of light chains. Myosin light chain 2 (MLC2), also known as myosin regulatory light chain (MRLC), RLC, or LC20, has many isoforms depending on its distribution. In smooth muscle, MLC2 is phosphorylated at Thr18 and Ser19 by myosin light chain kinase (MLCK) in a Ca<sup>2+</sup>/calmodulin-

dependent manner.

## Research Area

## Image Data



Western blot analysis of Myosin Light Chain 2 in rat heart, mouse heart lysates using MYL2 antibody.