

Product Name: Myelin Basic Protein Rabbit Monoclonal Antibody**Catalog #: AMRe85815**

For research use only.

Summary

| | |
|----------------------|--------------------------------------------------------------------------------------------|
| Description | Recombinant rabbit monoclonal antibody |
| Host | Rabbit |
| Application | WB |
| Reactivity | Mouse,Rat |
| Conjugation | Unconjugated |
| Modification | Unmodified |
| Isotype | IgG |
| Clonality | Monoclonal |
| Form | Liquid |
| Concentration | |
| Storage | Aliquot and store at -20°C (valid for 12 months). Avoid freeze/thaw cycles. |
| Shipping | Ice bags |
| Buffer | Purified antibody in TBS with 0.05% sodium azide,0.05%protective protein and 50% glycerol. |
| Purification | Affinity Purification |

Application

| | |
|-------------------------|--------------------------------------------|
| Dilution Ratio | WB 1:500-1:1000 |
| Molecular Weight | Calculated MW: 33 kDa; Observed MW: 18 kDa |

Antigen Information

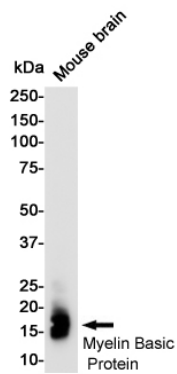
| | |
|--------------------------|-------------------------------------------------------------|
| Gene Name | Myelin Basic Protein |
| Alternative Names | Myelin membrane encephalitogenic protein; Myelin A1 protein |
| Gene ID | 4155.0 |
| SwissProt ID | P02686 |
| Immunogen | A synthetic peptide of human Myelin Basic Protein |

Background

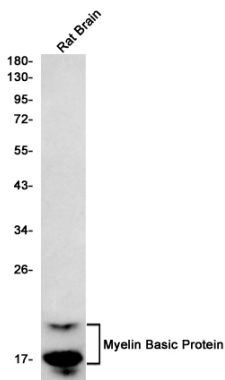
MBP belongs to the myelin basic protein family. The classic group of MBP isoforms (isoform 4-isoform 14) are the most abundant protein components of the myelin membrane in the CNS. They have a role in both its formation and stabilization. The smaller isoforms might have an important role in remyelination of denuded axons in multiple sclerosis.

Research Area

Image Data



Western blot analysis of Myelin Basic Protein in mouse Brain lysates using Myelin Basic Protein antibody.



Western blot analysis of Myelin Basic Protein in rat Brain lysates using Myelin Basic Protein antibody.