

Product Name: MSH2 Rabbit Monoclonal Antibody**Catalog #: AMRe85803**

For research use only.

Summary

| | |
|----------------------|--|
| Description | Recombinant rabbit monoclonal antibody |
| Host | Rabbit |
| Application | WB,IP |
| Reactivity | Human |
| Conjugation | Unconjugated |
| Modification | Unmodified |
| Isotype | IgG |
| Clonality | Monoclonal |
| Form | Liquid |
| Concentration | |
| Storage | Aliquot and store at -20°C (valid for 12 months). Avoid freeze/thaw cycles. |
| Shipping | Ice bags |
| Buffer | Purified antibody in TBS with 0.05% sodium azide, 0.05% protective protein and 50% glycerol. |
| Purification | Affinity Purification |

Application

| | |
|-------------------------|--|
| Dilution Ratio | WB 1:500-1:1000, IP 1:10-1:20 |
| Molecular Weight | Calculated MW: 105 kDa; Observed MW: 105 kDa |

Antigen Information

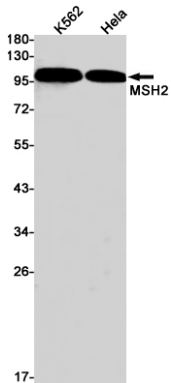
| | |
|--------------------------|--|
| Gene Name | MSH2 |
| Alternative Names | DNA mismatch repair protein Msh2; MutS protein homolog 2 |
| Gene ID | 4436.0 |
| SwissProt ID | P43246 |
| Immunogen | A synthetic peptide of human MSH2 |

Background

MSH2 (MutS homologue 2) forms the hMutS- α dimer with MSH6 and is an essential component of the mismatch repair process. hMutS- α is part of the BRCA1-associated surveillance complex (BASC), a complex that also contains BRCA1, MLH1, ATM, BLM, PMS2 proteins and the Rad50-Mre11-NBS1 complex.

Research Area

Image Data



Western blot analysis of MSH2 in K562, HeLa lysates using MSH2 antibody.