

---

**Product Name: MRPS26 Rabbit Monoclonal Antibody****Catalog #: AMRe85799**

For research use only.

**Summary**

<b>Description</b>	Recombinant rabbit monoclonal antibody
<b>Host</b>	Rabbit
<b>Application</b>	WB,ICC
<b>Reactivity</b>	Human
<b>Conjugation</b>	Unconjugated
<b>Modification</b>	Unmodified
<b>Isotype</b>	IgG
<b>Clonality</b>	Monoclonal
<b>Form</b>	Liquid
<b>Concentration</b>	
<b>Storage</b>	Aliquot and store at -20°C (valid for 12 months). Avoid freeze/thaw cycles.
<b>Shipping</b>	Ice bags
<b>Buffer</b>	Purified antibody in TBS with 0.05% sodium azide,0.05%protective protein and 50% glycerol.
<b>Purification</b>	Affinity Purification

**Application**

<b>Dilution Ratio</b>	WB 1:500-1:1000,ICC 1:50-1:200
<b>Molecular Weight</b>	Calculated MW: 24 kDa; Observed MW: 24 kDa

**Antigen Information**

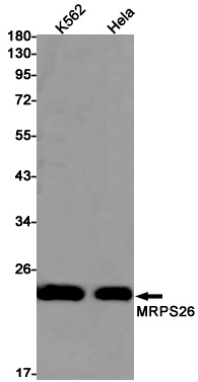
<b>Gene Name</b>	MRPS26
<b>Alternative Names</b>	GI008; MRPS13; RPMS13; MRP-S13; MRP-S26; NY-BR-87; C20orf193; dJ534B8.3
<b>Gene ID</b>	64949.0
<b>SwissProt ID</b>	Q9BYN8
<b>Immunogen</b>	Recombinant protein of human MRPS26

**Background**

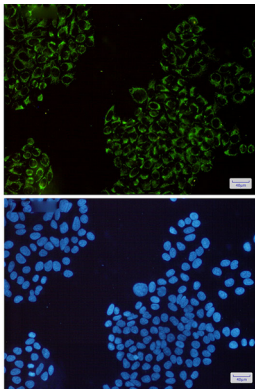
Mammalian mitochondrial ribosomal proteins are encoded by nuclear genes and help in protein synthesis within the mitochondrion. Mitochondrial ribosomes (mitoribosomes) consist of a small 28S subunit and a large 39S subunit.

## Research Area

## Image Data



Western blot analysis of MRPS26 in K562, HeLa lysates using MRPS26 antibody.



Immunocytochemistry analysis of MRPS26(green) in HeLa using MRPS26 antibody, and DAPI(blue)