

Summary

Production Name	Mre11 Rabbit Monoclonal Antibody
Description	Rabbit Monoclonal antibody
Host	Rabbit
Application	WB,IHC
Reactivity	Human,Mouse,Rat

Performance

Conjugation	Unconjugated
Modification	Unmodified
Isotype	IgG
Clonality	Monoclonal
Form	Liquid
Storage	Store at 4°C short term. Aliquot and store at -20°C long term. Avoid freeze/thaw cycles.
Buffer	Purified antibody in TBS with 0.05% sodium azide,0.05%protective protein and 50% glycerol.
Purification	Affinity Purification

Immunogen

Gene Name	Mre11
Alternative Names	MRE11 homolog 1; Meiotic recombination 11 homolog A; MRE11 homolog A; MRE11A; HNGS1; MRE11
Gene ID	4361.0
SwissProt ID	P49959.Recombinant protein of human Mre11

Application

Dilution Ratio	WB:1:500-1:1000,IHC:1:50-1:100
Molecular Weight	Calculated MW: 81 kDa; Observed MW: 81 kDa

Product Name: Mre11 Rabbit Monoclonal Antibody
Catalog #: AMRe85798

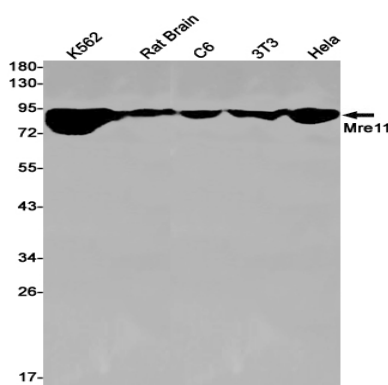


Background

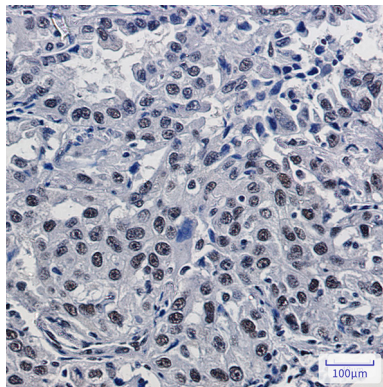
DNA double-strand breaks are generated by ionizing radiation and endogenously produced radicals, and they often are repaired through the RAD52 homologous recombination pathway. The complex possesses single-strand endonuclease activity and double-strand-specific 3'-5' exonuclease activity, which are provided by MRE11A. RAD50 may be required to bind DNA ends and hold them in close proximity.

Research Area

Image Data



Western blot analysis of Mre11 in K562, rat Brain, C6, 3T3, HeLa lysates using Mre11 antibody.



Immunohistochemistry analysis of paraffin-embedded Human lung cancer using Mre11 antibody. High-pressure and temperature Sodium Citrate pH 6.0 was used for antigen retrieval.

Note

For research use only.