

**Product Name: MMP26 Rabbit Monoclonal Antibody**  
**Catalog #: AMRe85793**



## Summary

<b>Production Name</b>	MMP26 Rabbit Monoclonal Antibody
<b>Description</b>	Rabbit Monoclonal antibody
<b>Host</b>	Rabbit
<b>Application</b>	WB
<b>Reactivity</b>	Human,Rat,Hamster

## Performance

<b>Conjugation</b>	Unconjugated
<b>Modification</b>	Unmodified
<b>Isotype</b>	IgG
<b>Clonality</b>	Monoclonal
<b>Form</b>	Liquid
<b>Storage</b>	Store at 4°C short term. Aliquot and store at -20°C long term. Avoid freeze/thaw cycles.
<b>Buffer</b>	Purified antibody in TBS with 0.05% sodium azide,0.05%protective protein and 50% glycerol.
<b>Purification</b>	Affinity Purification

## Immunogen

<b>Gene Name</b>	MMP26
<b>Alternative Names</b>	Matrix metalloproteinase-26; Endometase; Matrilysin-2
<b>Gene ID</b>	56547.0
<b>SwissProt ID</b>	Q9NRE1. A synthetic peptide of human MMP26

## Application

<b>Dilution Ratio</b>	WB:1:500-1:1000
<b>Molecular Weight</b>	Calculated MW: 30 kDa; Observed MW: 19 kDa

## Background

May hydrolyze collagen type IV, fibronectin, fibrinogen, beta-casein, type I gelatin and alpha-1 proteinase inhibitor.

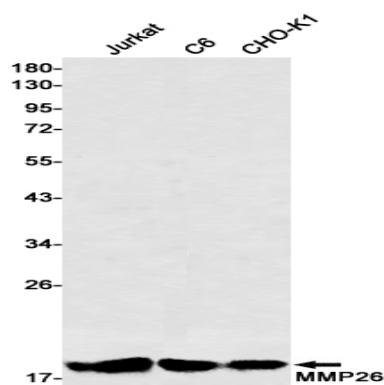
**Product Name: MMP26 Rabbit Monoclonal Antibody**  
**Catalog #: AMRe85793**

---



## Research Area

## Image Data



Western blot analysis of MMP26 in Jurkat, C6, CHO-K1 lysates using MMP26 antibody.

## Note

For research use only.