

**Product Name:** Methylmalonyl Coenzyme A mutase Rabbit Monoclonal Antibody  
**Catalog #:** AMRe85782

For research use only.

## Summary

<b>Description</b>	Recombinant rabbit monoclonal antibody
<b>Host</b>	Rabbit
<b>Application</b>	WB,IHC
<b>Reactivity</b>	Human,Rat
<b>Conjugation</b>	Unconjugated
<b>Modification</b>	Unmodified
<b>Isotype</b>	IgG
<b>Clonality</b>	Monoclonal
<b>Form</b>	Liquid
<b>Concentration</b>	
<b>Storage</b>	Aliquot and store at -20°C (valid for 12 months). Avoid freeze/thaw cycles.
<b>Shipping</b>	Ice bags
<b>Buffer</b>	Purified antibody in TBS with 0.05% sodium azide,0.05%protective protein and 50% glycerol.
<b>Purification</b>	Affinity Purification

## Application

<b>Dilution Ratio</b>	WB 1:500-1:1000,IHC 1:50-1:100
<b>Molecular Weight</b>	Calculated MW: 83 kDa; Observed MW: 83 kDa

## Antigen Information

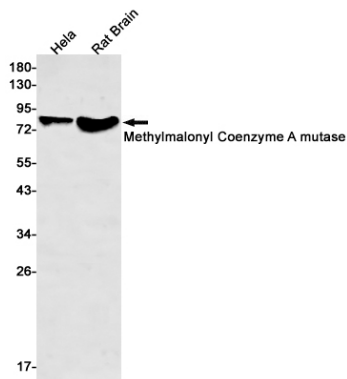
<b>Gene Name</b>	Methylmalonyl Coenzyme A mutase
<b>Alternative Names</b>	MCM
<b>Gene ID</b>	4594.0
<b>SwissProt ID</b>	P22033
<b>Immunogen</b>	A synthetic peptide of human Methylmalonyl Coenzyme A mutase

## Background

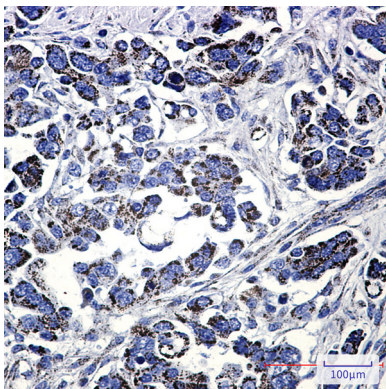
Involved in the degradation of several amino acids, odd-chain fatty acids and cholesterol via propionyl-CoA to the tricarboxylic acid cycle. MCM has different functions in other species.

## Research Area

### Image Data



Western blot analysis of Methylmalonyl Coenzyme A mutase in HeLa, rat Brain lysates using Methylmalonyl Coenzyme A mutase antibody.



Immunohistochemistry analysis of paraffin-embedded Human Cholangiocarcinoma using Methylmalonyl Coenzyme A mutase antibody. High-pressure and temperature Sodium Citrate pH 6.0 was used for antigen retrieval.