

Product Name: MEKK2 Rabbit Monoclonal Antibody**Catalog #: AMRe85779**

For research use only.

Summary

Description	Recombinant rabbit monoclonal antibody
Host	Rabbit
Application	WB,ICC,IP
Reactivity	Human,Mouse,Rat
Conjugation	Unconjugated
Modification	Unmodified
Isotype	IgG
Clonality	Monoclonal
Form	Liquid
Concentration	
Storage	Aliquot and store at -20°C (valid for 12 months). Avoid freeze/thaw cycles.
Shipping	Ice bags
Buffer	Purified antibody in TBS with 0.05% sodium azide,0.05%protective protein and 50% glycerol.
Purification	Affinity Purification

Application

Dilution Ratio	WB 1:500-1:1000,ICC 1:50-1:200,IP 1:10-1:20
Molecular Weight	Calculated MW: 70 kDa; Observed MW: 70 kDa

Antigen Information

Gene Name	MEKK2
Alternative Names	MAP3K2; MAPKKK2; MEKK2; Mitogen-activated protein kinase kinase kinase 2; MAPK/ERK kinase kinase 2; MEK kinase 2; MEKK 2
Gene ID	10746.0
SwissProt ID	Q9Y2U5
Immunogen	A synthetic peptide of human MEKK2

Background

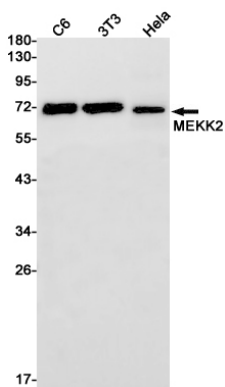
The protein encoded by this gene is a member of serine/threonine protein kinase family. This kinase preferentially activates the kinases involved in the MAP kinase signaling pathway including MAPK7 and MAP2K4. This kinase has been shown to directly

phosphorylate and activate I kappa B kinases (IKKs), and thus plays a role in NF-kappa B signaling pathway. This kinase has also been found to bind and activate protein kinase C-related kinase 2 (PRKCL2/PRK2), which suggests its involvement in PRKCL2 regulated signaling process.

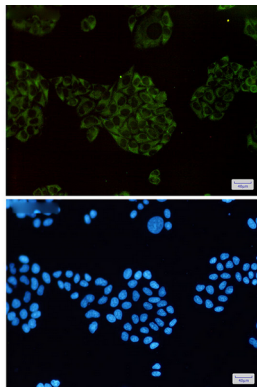
Research Area

MAPK signaling pathway

Image Data



Western blot analysis of MEKK2 in C6, 3T3, HeLa lysates using MEKK2 antibody.



Immunocytochemistry analysis of MEKK2(green) in HeLa using MEKK2 antibody, and DAPI(blue)