

Product Name: MDH2 Rabbit Monoclonal Antibody**Catalog #: AMRe85776**

For research use only.

Summary

Description	Recombinant rabbit monoclonal antibody
Host	Rabbit
Application	WB,IHC
Reactivity	Human,Mouse,Rat
Conjugation	Unconjugated
Modification	Unmodified
Isotype	IgG
Clonality	Monoclonal
Form	Liquid
Concentration	
Storage	Aliquot and store at -20°C (valid for 12 months). Avoid freeze/thaw cycles.
Shipping	Ice bags
Buffer	Purified antibody in TBS with 0.05% sodium azide,0.05%protective protein and 50% glycerol.
Purification	Affinity Purification

Application

Dilution Ratio	WB 1:500-1:1000,IHC 1:50-1:100
Molecular Weight	Calculated MW: 36 kDa; Observed MW: 36 kDa

Antigen Information

Gene Name	MDH2
Alternative Names	MDH; MOR1; M-MDH; EIEE51; MGC:3559
Gene ID	4191.0
SwissProt ID	P40926
Immunogen	A synthetic peptide of human MDH2

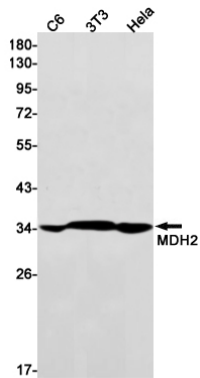
Background

Malate dehydrogenase catalyzes the reversible oxidation of malate to oxaloacetate, utilizing the NAD/NADH cofactor system in the citric acid cycle. The protein encoded by this gene is localized to the mitochondria and may play pivotal roles in the malate-aspartate shuttle that operates in the metabolic coordination between cytosol and mitochondria. Several transcript variants

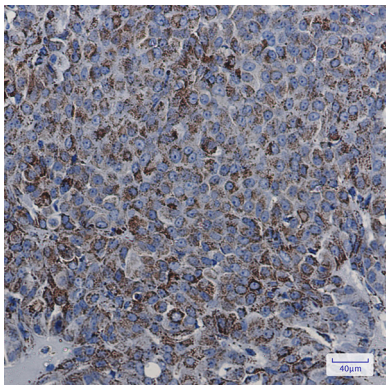
encoding different isoforms have been found for this gene.

Research Area

Image Data



Western blot analysis of MDH2 in C6, 3T3, HeLa lysates using MDH2 antibody.



Immunohistochemistry analysis of paraffin-embedded Human breast cancer using MDH2 antibody. High-pressure and temperature Sodium Citrate pH 6.0 was used for antigen retrieval.