
Product Name: M-CSF Rabbit Monoclonal Antibody**Catalog #: AMRe85773**

For research use only.

Summary

Description	Recombinant rabbit monoclonal antibody
Host	Rabbit
Application	WB,IHC,ICC
Reactivity	Human
Conjugation	Unconjugated
Modification	Unmodified
Isotype	IgG
Clonality	Monoclonal
Form	Liquid
Concentration	
Storage	Aliquot and store at -20°C (valid for 12 months). Avoid freeze/thaw cycles.
Shipping	Ice bags
Buffer	Purified antibody in TBS with 0.05% sodium azide,0.05%protective protein and 50% glycerol.
Purification	Affinity Purification

Application

Dilution Ratio	WB 1:500-1:1000,IHC 1:50-1:100,ICC 1:50-1:200
Molecular Weight	48kDa

Antigen Information

Gene Name	M-CSF
Alternative Names	CSF1; Macrophage colony-stimulating factor 1; CSF-1; M-CSF; MCSF; Lanimostim
Gene ID	1435.0
SwissProt ID	P09603
Immunogen	A synthetic peptide of human M-CSF

Background

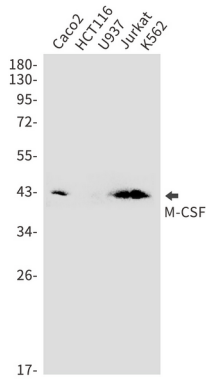
CSF1, also known as MCSF, is a four- α -helical bundle cytokine that controls the production, differentiation, and function of macrophages. The active form of the protein is found extracellularly as a disulfide-linked homodimer, and is thought to be produced by proteolytic cleavage of membrane-bound precursors. This protein may be involved in development of the

placenta.

Research Area

PI3K-Akt signaling pathway

Image Data



Western blot analysis of M-CSF in Caco2, HCT116, U937, Jurkat, K562 lysates using M-CSF antibody.