

**Product Name: MBD2 Rabbit Monoclonal Antibody****Catalog #: AMRe85771**

For research use only.

**Summary**

<b>Description</b>	Recombinant rabbit monoclonal antibody
<b>Host</b>	Rabbit
<b>Application</b>	WB,IHC,ICC,IP
<b>Reactivity</b>	Human,Mouse,Rat
<b>Conjugation</b>	Unconjugated
<b>Modification</b>	Unmodified
<b>Isotype</b>	IgG
<b>Clonality</b>	Monoclonal
<b>Form</b>	Liquid
<b>Concentration</b>	0.63mg/ml. The concentration of this product may be batch-dependent.
<b>Storage</b>	Aliquot and store at -20°C (valid for 12 months). Avoid freeze/thaw cycles.
<b>Shipping</b>	Ice bags
<b>Buffer</b>	Purified antibody in TBS with 0.05% sodium azide,0.05%protective protein and 50% glycerol.
<b>Purification</b>	Affinity Purification

**Application**

<b>Dilution Ratio</b>	WB 1:500-1:1000,IHC 1:50-1:100,ICC 1:50-1:200,IP 1:10-1:20
<b>Molecular Weight</b>	Calculated MW: 43 kDa; Observed MW: 43 kDa

**Antigen Information**

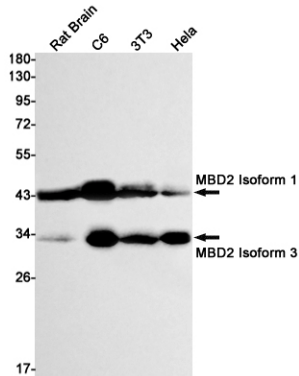
<b>Gene Name</b>	MBD2
<b>Alternative Names</b>	Demethylase; DMTase; Mbd2; MBD2a
<b>Gene ID</b>	8932.0
<b>SwissProt ID</b>	Q9UBB5
<b>Immunogen</b>	A synthetic peptide of human MBD2

**Background**

Binds CpG islands in promoters where the DNA is methylated at position 5 of cytosine within CpG dinucleotides. Binds hemimethylated DNA as well. Recruits histone deacetylases and DNA methyltransferases.

## Research Area

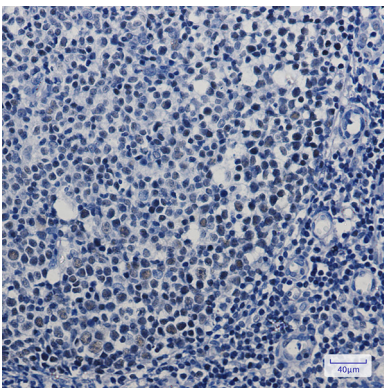
## Image Data



Western blot analysis of MBD2 in rat Brain, C6, 3T3, HeLa lysates using MBD2 antibody.



Immunocytochemistry analysis of MBD2 (green) in HL-60 using MBD2 antibody, and DAPI (blue).



Immunohistochemistry analysis of paraffin-embedded Human tonsil using MBD2 antibody. High-pressure and temperature Sodium Citrate pH 6.0 was used for antigen retrieval.