

Product Name: MetRS Rabbit Monoclonal Antibody**Catalog #: AMRe85768**

For research use only.

Summary

| | |
|----------------------|--|
| Description | Recombinant rabbit monoclonal antibody |
| Host | Rabbit |
| Application | WB,IHC,ICC,IP |
| Reactivity | Human,Rat |
| Conjugation | Unconjugated |
| Modification | Unmodified |
| Isotype | IgG |
| Clonality | Monoclonal |
| Form | Liquid |
| Concentration | 0.63mg/ml. The concentration of this product may be batch-dependent. |
| Storage | Aliquot and store at -20°C (valid for 12 months). Avoid freeze/thaw cycles. |
| Shipping | Ice bags |
| Buffer | Purified antibody in TBS with 0.05% sodium azide,0.05%protective protein and 50% glycerol. |
| Purification | Affinity Purification |

Application

| | |
|-------------------------|--|
| Dilution Ratio | WB 1:500-1:1000,IHC 1:50-1:100,ICC 1:50-1:200,IP 1:10-1:20 |
| Molecular Weight | Calculated MW: 101 kDa; Observed MW: 101 kDa |

Antigen Information

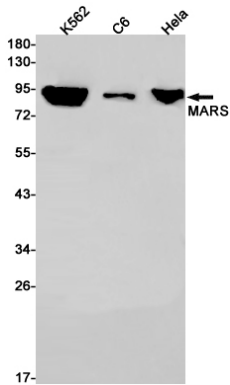
| | |
|--------------------------|--|
| Gene Name | MetRS |
| Alternative Names | MRS; ILLD; CMT2U; ILFS2; METRS; MTRNS; SPG70 |
| Gene ID | 4141.0 |
| SwissProt ID | P56192 |
| Immunogen | A synthetic peptide of human MARS |

Background

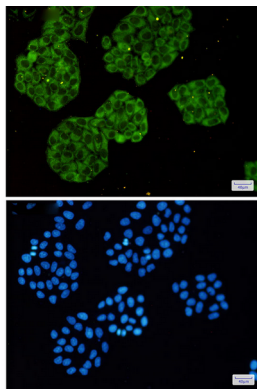
Catalyzes the specific attachment of an amino acid to its cognate tRNA in a 2 step reaction: the amino acid (AA) is first activated by ATP to form AA-AMP and then transferred to the acceptor end of the tRNA.

Research Area

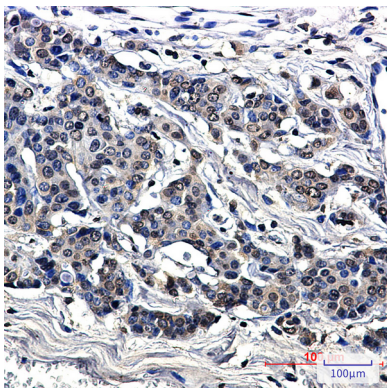
Image Data



Western blot analysis of MARS in K562, C6, HeLa lysates using MetRS antibody.



Immunocytochemistry analysis of MARS(green) in HeLa using MARS antibody, and DAPI(blue)



Immunohistochemistry analysis of paraffin-embedded Human breast cancer using MetRS/MARS antibody. High-pressure and temperature Sodium Citrate pH 6.0 was used for antigen retrieval.