
Product Name: MAD2L2 Rabbit Monoclonal Antibody**Catalog #: AMRe85764**

For research use only.

Summary

Description	Recombinant rabbit monoclonal antibody
Host	Rabbit
Application	WB,ICC,IP
Reactivity	Human
Conjugation	Unconjugated
Modification	Unmodified
Isotype	IgG
Clonality	Monoclonal
Form	Liquid
Concentration	
Storage	Aliquot and store at -20°C (valid for 12 months). Avoid freeze/thaw cycles.
Shipping	Ice bags
Buffer	Purified antibody in TBS with 0.05% sodium azide,0.05%protective protein and 50% glycerol.
Purification	Affinity Purification

Application

Dilution Ratio	WB 1:500-1:1000,ICC 1:50-1:200,IP 1:10-1:20
Molecular Weight	Calculated MW: 24 kDa; Observed MW: 24 kDa

Antigen Information

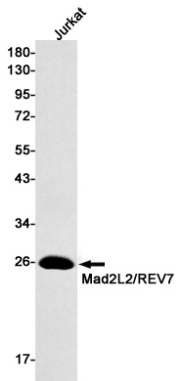
Gene Name	MAD2L2
Alternative Names	REV7; FANCV; MAD2B; POLZ2
Gene ID	10459.0
SwissProt ID	Q9UI95
Immunogen	A synthetic peptide of human Mad2L2

Background

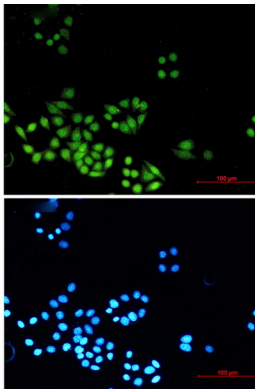
Adapter protein able to interact with different proteins and involved in different biological processes. Mediates the interaction between the error-prone DNA polymerase zeta catalytic subunit REV3L and the inserter polymerase REV1, thereby mediating the second polymerase switching in translesion DNA synthesis.

Research Area

Image Data



Western blot analysis of Mad2L2/REV7 in Jurkat lysates using MAD2L2 antibody.



Immunocytochemistry analysis of Mad2L2/REV7 (green) in HeLa cells using Mad2L2/REV7 antibody and DAPI (blue).