
Product Name: Lumican Rabbit Monoclonal Antibody**Catalog #: AMRe85761**

For research use only.

Summary

Description	Recombinant rabbit monoclonal antibody
Host	Rabbit
Application	WB,IHC,ICC
Reactivity	Human,Mouse,Rat
Conjugation	Unconjugated
Modification	Unmodified
Isotype	IgG
Clonality	Monoclonal
Form	Liquid
Concentration	0.63mg/ml. The concentration of this product may be batch-dependent.
Storage	Aliquot and store at -20°C (valid for 12 months). Avoid freeze/thaw cycles.
Shipping	Ice bags
Buffer	Purified antibody in TBS with 0.05% sodium azide,0.05%protective protein and 50% glycerol.
Purification	Affinity Purification

Application

Dilution Ratio	WB 1:500-1:1000,IHC 1:50-1:100,ICC 1:50-1:200
Molecular Weight	Calculated MW: 38 kDa; Observed MW: 60 kDa

Antigen Information

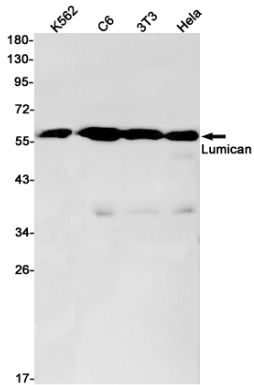
Gene Name	Lumican
Alternative Names	LDC; LUM; Lumican; SLRR2D
Gene ID	4060.0
SwissProt ID	P51884
Immunogen	A synthetic peptide of human Lumican

Background

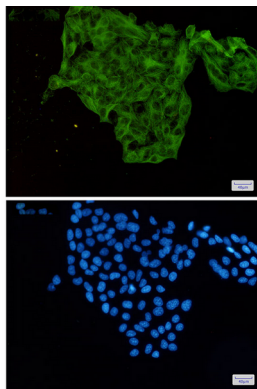
Belongs to the small leucine-rich proteoglycan (SLRP) family. SLRP class II subfamily. Contains 11 LRR (leucine-rich) repeats. Contains 1 LRRNT domain.

Research Area

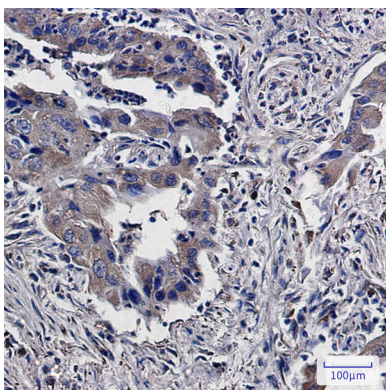
Image Data



Western blot analysis of Lumican in K562, C6, 3T3, HeLa lysates using Lumican antibody.



Immunocytochemistry analysis of Lumican (green) in HeLa using Lumican antibody, and DAPI (blue)



Immunohistochemistry analysis of paraffin-embedded Human lung cancer using Lumican antibody. High-pressure and temperature Sodium Citrate pH 6.0 was used for antigen retrieval.