
Product Name: LRRC15 Rabbit Monoclonal Antibody**Catalog #: AMRe85760**

For research use only.

Summary

Description	Recombinant rabbit monoclonal antibody
Host	Rabbit
Application	WB
Reactivity	Mouse,Rat
Conjugation	Unconjugated
Modification	Unmodified
Isotype	IgG
Clonality	Monoclonal
Form	Liquid
Concentration	
Storage	Aliquot and store at -20°C (valid for 12 months). Avoid freeze/thaw cycles.
Shipping	Ice bags
Buffer	Purified antibody in TBS with 0.05% sodium azide,0.05%protective protein and 50% glycerol.
Purification	Affinity Purification

Application

Dilution Ratio	WB 1:500-1:1000
Molecular Weight	Calculated MW: 64 kDa; Observed MW: 64 kDa

Antigen Information

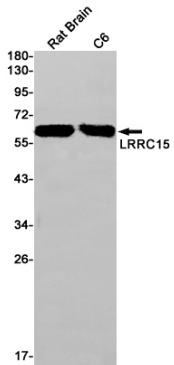
Gene Name	LRRC15
Alternative Names	LIB
Gene ID	131578.0
SwissProt ID	Q8TF66
Immunogen	A synthetic peptide of human LRRC15

Background

Enables collagen binding activity; fibronectin binding activity; and laminin binding activity. Involved in negative regulation of protein localization to plasma membrane; positive regulation of cell migration; and receptor-mediated virion attachment to host cell. Located in extracellular exosome. Colocalizes with collagen-containing extracellular matrix.

Research Area

Image Data



Western blot analysis of LRRC15 in rat Brain, C6 lysates using LRRC15 antibody.