

Product Name: LIS1 Rabbit Monoclonal Antibody
Catalog #: AMRe85753



Summary

Production Name	LIS1 Rabbit Monoclonal Antibody
Description	Rabbit Monoclonal antibody
Host	Rabbit
Application	WB,IP
Reactivity	Rat, Hamster

Performance

Conjugation	Unconjugated
Modification	Unmodified
Isotype	IgG
Clonality	Monoclonal
Form	Liquid
Storage	Store at 4°C short term. Aliquot and store at -20°C long term. Avoid freeze/thaw cycles.
Buffer	Purified antibody in TBS with 0.05% sodium azide, 0.05% protective protein and 50% glycerol.
Purification	Affinity Purification

Immunogen

Gene Name	LIS1
Alternative Names	MDS; LIS1; LIS2; MDCR; NudF; PAFAH
Gene ID	5048.0
SwissProt ID	P43034. A synthetic peptide of human LIS1

Application

Dilution Ratio	WB:1:500-1:1000, IP:45677
Molecular Weight	Calculated MW: 47 kDa; Observed MW: 47 kDa

Background

Required for proper activation of Rho GTPases and actin polymerization at the leading edge of locomoting cerebellar

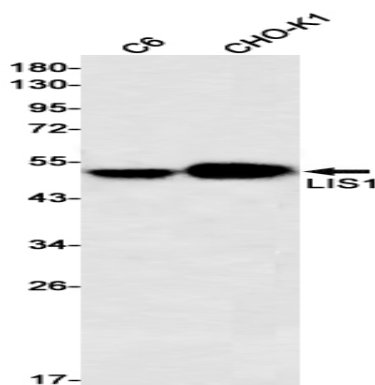
Product Name: LIS1 Rabbit Monoclonal Antibody
Catalog #: AMRe85753



neurons and postmigratory hippocampal neurons in response to calcium influx triggered via NMDA receptors.

Research Area

Image Data



Western blot analysis of LIS1 in C6, CHO-K1 lysates using LIS1 antibody.

Note

For research use only.