

Product Name: Laminin gamma 1 Rabbit Monoclonal Antibody**Catalog #: AMRe85744**

For research use only.

Summary

| | |
|----------------------|--|
| Description | Recombinant rabbit monoclonal antibody |
| Host | Rabbit |
| Application | WB,IHC,IP |
| Reactivity | Human,Mouse,Rat |
| Conjugation | Unconjugated |
| Modification | Unmodified |
| Isotype | IgG |
| Clonality | Monoclonal |
| Form | Liquid |
| Concentration | |
| Storage | Aliquot and store at -20°C (valid for 12 months). Avoid freeze/thaw cycles. |
| Shipping | Ice bags |
| Buffer | Purified antibody in TBS with 0.05% sodium azide,0.05%protective protein and 50% glycerol. |
| Purification | Affinity Purification |

Application

| | |
|-------------------------|--|
| Dilution Ratio | WB 1:500-1:1000,IHC 1:50-1:100,IP 1:10-1:20 |
| Molecular Weight | Calculated MW: 178 kDa; Observed MW: 220-250 kDa |

Antigen Information

| | |
|--------------------------|---|
| Gene Name | Laminin gamma 1 LAMC1; LAMB2; Laminin subunit gamma-1; Laminin B2 chain; Laminin-1 subunit gamma; |
| Alternative Names | Laminin-10 subunit gamma; Laminin-11 subunit gamma; Laminin-2 subunit gamma; Laminin-3 subunit gamma; Laminin-4 subunit gamma; Laminin-6 subunit gamma; Lamini |
| Gene ID | 3915.0 |
| SwissProt ID | P11047 |
| Immunogen | Recombinant protein of human Laminin gamma 1 |

Background

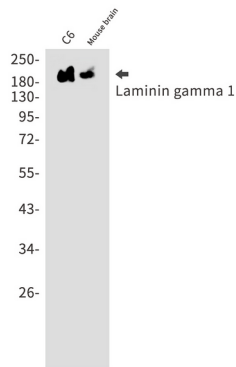
Binding to cells via a high affinity receptor, laminin is thought to mediate the attachment, migration and organization of cells

into tissues during embryonic development by interacting with other extracellular matrix components.

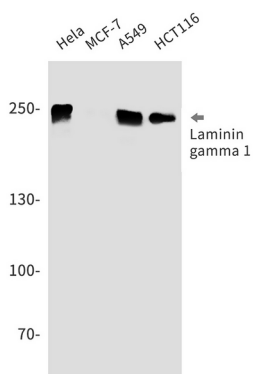
Research Area

PI3K-Akt signaling pathway

Image Data



Western blot analysis of Laminin gamma 1 in C6, mouse brain lysates using Laminin gamma 1 antibody.



Western blot analysis of Laminin gamma 1 in HeLa, MCF-7, A549, HCT116 lysates using Laminin gamma 1 antibody.