

**Product Name:** Lactate Dehydrogenase C Rabbit Monoclonal Antibody**Catalog #:** AMRe85741

For research use only.

**Summary**

<b>Description</b>	Recombinant rabbit monoclonal antibody
<b>Host</b>	Rabbit
<b>Application</b>	WB
<b>Reactivity</b>	Human
<b>Conjugation</b>	Unconjugated
<b>Modification</b>	Unmodified
<b>Isotype</b>	IgG
<b>Clonality</b>	Monoclonal
<b>Form</b>	Liquid
<b>Concentration</b>	
<b>Storage</b>	Aliquot and store at -20°C (valid for 12 months). Avoid freeze/thaw cycles.
<b>Shipping</b>	Ice bags
<b>Buffer</b>	Purified antibody in TBS with 0.05% sodium azide, 0.05% protective protein and 50% glycerol.
<b>Purification</b>	Affinity Purification

**Application**

<b>Dilution Ratio</b>	WB 1:500-1:1000
<b>Molecular Weight</b>	Calculated MW: 36 kDa; Observed MW: 36 kDa

**Antigen Information**

<b>Gene Name</b>	Lactate Dehydrogenase C
<b>Alternative Names</b>	CT32; LDH3; LDHX
<b>Gene ID</b>	3948.0
<b>SwissProt ID</b>	P07864
<b>Immunogen</b>	A synthetic peptide of human Lactate Dehydrogenase C

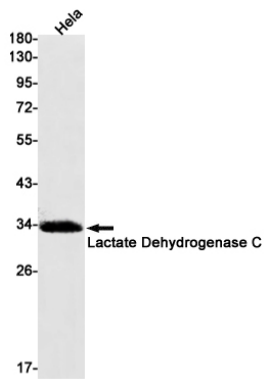
**Background**

Possible role in sperm motility.

**Research Area**

---

## Image Data



Western blot analysis of Lactate Dehydrogenase C in HeLa lysates using Lactate Dehydrogenase C antibody.