
Product Name: KMT6 Rabbit Monoclonal Antibody**Catalog #: AMRe85738**

For research use only.

Summary

Description	Recombinant rabbit monoclonal antibody
Host	Rabbit
Application	WB,ICC
Reactivity	Human,Mouse,Rat
Conjugation	Unconjugated
Modification	Unmodified
Isotype	IgG
Clonality	Monoclonal
Form	Liquid
Concentration	
Storage	Aliquot and store at -20°C (valid for 12 months). Avoid freeze/thaw cycles.
Shipping	Ice bags
Buffer	Purified antibody in TBS with 0.05% sodium azide,0.05%protective protein and 50% glycerol.
Purification	Affinity Purification

Application

Dilution Ratio	WB 1:500-1:1000,ICC 1:50-1:200
Molecular Weight	Calculated MW: 85 kDa; Observed MW: 98 kDa

Antigen Information

Gene Name	KMT6
Alternative Names	WVS; ENX1; KMT6; WVS2; ENX-1; EZH2b; KMT6A; EZH2
Gene ID	2146.0
SwissProt ID	Q15910
Immunogen	A synthetic peptide of human KMT6/EZH2

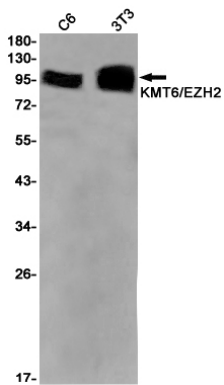
Background

Polycomb group (PcG) protein. Catalytic subunit of the PRC2/EED-EZH2 complex, which methylates 'Lys-9' and 'Lys-27' of histone H3, leading to transcriptional repression of the affected target gene. Able to mono-, di- and trimethylate 'Lys-27' of histone H3 to form H3K27me1, H3K27me2 and H3K27me3, respectively. Compared to EZH2-containing complexes, it is more

abundant in embryonic stem cells and plays a major role in forming H3K27me3, which is required for embryonic stem cell identity and proper differentiation.

Research Area

Image Data



Western blot analysis of KMT6/EZH2 in C6, 3T3 lysates using KMT6 antibody.