
Product Name: KCTD3 Rabbit Monoclonal Antibody**Catalog #: AMRe85730**

For research use only.

Summary

Description	Recombinant rabbit monoclonal antibody
Host	Rabbit
Application	WB
Reactivity	Human
Conjugation	Unconjugated
Modification	Unmodified
Isotype	IgG
Clonality	Monoclonal
Form	Liquid
Concentration	
Storage	Aliquot and store at -20°C (valid for 12 months). Avoid freeze/thaw cycles.
Shipping	Ice bags
Buffer	Purified antibody in TBS with 0.05% sodium azide, 0.05% protective protein and 50% glycerol.
Purification	Affinity Purification

Application

Dilution Ratio	WB 1:500-1:1000
Molecular Weight	Calculated MW: 89 kDa; Observed MW: 89 kDa

Antigen Information

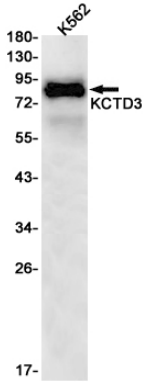
Gene Name	KCTD3
Alternative Names	Renal carcinoma antigen NY-REN-45
Gene ID	51133.0
SwissProt ID	Q9Y597
Immunogen	Recombinant protein of human KCTD3

Background

Accessory subunit of potassium/sodium hyperpolarization-activated cyclic nucleotide-gated channel 3 (HCN3) up-regulating its cell-surface expression and current density without affecting its voltage dependence and kinetics.

Research Area

Image Data



Western blot analysis of KCTD3 in K562 lysates using KCTD3 antibody.