
Product Name: KCTD21 Rabbit Monoclonal Antibody**Catalog #: AMRe85729**

For research use only.

Summary

Description	Recombinant rabbit monoclonal antibody
Host	Rabbit
Application	WB
Reactivity	Human,Mouse,Rat
Conjugation	Unconjugated
Modification	Unmodified
Isotype	IgG
Clonality	Monoclonal
Form	Liquid
Concentration	
Storage	Aliquot and store at -20°C (valid for 12 months). Avoid freeze/thaw cycles.
Shipping	Ice bags
Buffer	Purified antibody in TBS with 0.05% sodium azide,0.05%protective protein and 50% glycerol.
Purification	Affinity Purification

Application

Dilution Ratio	WB 1:500-1:1000
Molecular Weight	Calculated MW: 30 kDa; Observed MW: 30 kDa

Antigen Information

Gene Name	KCTD21
Alternative Names	KCASH2
Gene ID	283219.0
SwissProt ID	Q4G0X4
Immunogen	Recombinant protein of human KCTD21

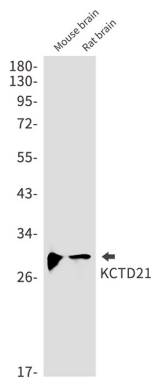
Background

Probable substrate-specific adapter of a BCR (BTB-CUL3-RBX1) E3 ubiquitin-protein ligase complex mediating the ubiquitination and subsequent proteasomal degradation of target proteins. Promotes the ubiquitination of HDAC1. Can function as antagonist of the Hedgehog pathway by affecting the nuclear transfer of transcription factor GLI1; the function

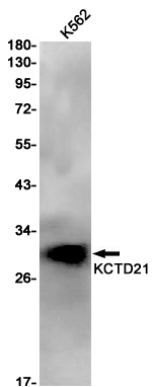
probably occurs via HDAC1 down-regulation, keeping GLI1 acetylated and inactive. Inhibits cell growth and tumorigenicity of medulloblastoma (MDB) (PubMed:21472142).

Research Area

Image Data



Western blot analysis of KCTD21 in mouse brain, rat brain lysates using KCTD21 antibody.



Western blot analysis of KCTD21 in K562 lysates using KCTD21 antibody.