
Product Name: KAP1 Rabbit Monoclonal Antibody**Catalog #: AMRe85726**

For research use only.

Summary

Description	Recombinant rabbit monoclonal antibody
Host	Rabbit
Application	WB,IHC,ICC
Reactivity	Human,Mouse,Rat
Conjugation	Unconjugated
Modification	Unmodified
Isotype	IgG
Clonality	Monoclonal
Form	Liquid
Concentration	0.63mg/ml. The concentration of this product may be batch-dependent.
Storage	Aliquot and store at -20°C (valid for 12 months). Avoid freeze/thaw cycles.
Shipping	Ice bags
Buffer	Purified antibody in TBS with 0.05% sodium azide,0.05%protective protein and 50% glycerol.
Purification	Affinity Purification

Application

Dilution Ratio	WB 1:500-1:1000,IHC 1:50-1:100,ICC 1:50-1:200
Molecular Weight	Calculated MW: 89 kDa; Observed MW: 100 kDa

Antigen Information

Gene Name	KAP1 TRIM28; KAP1; RNF96; TIF1B; Transcription intermediary factor 1-beta; TIF1-beta; E3 SUMO-
Alternative Names	protein ligase TRIM28; KRAB-associated protein 1; KAP-1; KRAB-interacting protein 1; KRIP-1; Nuclear corepressor KAP-1; RING finger protein 96; Tripart
Gene ID	10155.0
SwissProt ID	Q13263
Immunogen	A synthetic peptide of human KAP1

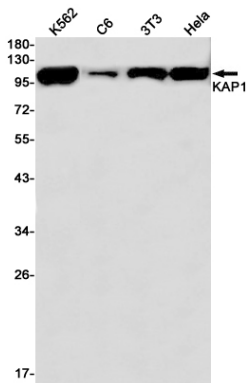
Background

Nuclear corepressor for KRAB domain-containing zinc finger proteins (KRAB-ZFPs). Mediates gene silencing by recruiting

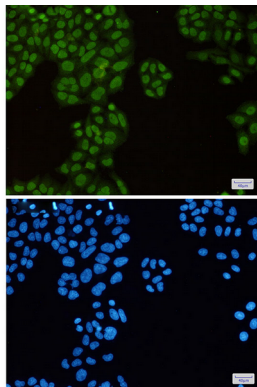
CHD3, a subunit of the nucleosome remodeling and deacetylation (NuRD) complex, and SETDB1 (which specifically methylates histone H3 at 'Lys-9' (H3K9me)) to the promoter regions of KRAB target genes.

Research Area

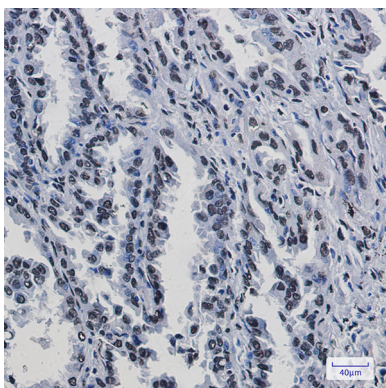
Image Data



Western blot analysis of KAP1 in K562, C6, 3T3, HeLa lysates using KAP1 antibody.



Immunocytochemistry analysis of KAP1(green) in HeLa using KAP1 antibody, and DAPI(blue)



Immunohistochemistry analysis of paraffin-embedded Human lung cancer using KAP1 antibody. High-pressure and temperature Sodium Citrate pH 6.0 was used for antigen retrieval.