
Product Name: Integrin beta 6 Rabbit Monoclonal Antibody**Catalog #: AMRe85719**

For research use only.

Summary

Description	Recombinant rabbit monoclonal antibody
Host	Rabbit
Application	WB,IP
Reactivity	Human,Mouse,Rat
Conjugation	Unconjugated
Modification	Unmodified
Isotype	IgG
Clonality	Monoclonal
Form	Liquid
Concentration	
Storage	Aliquot and store at -20°C (valid for 12 months). Avoid freeze/thaw cycles.
Shipping	Ice bags
Buffer	Purified antibody in TBS with 0.05% sodium azide,0.05%protective protein and 50% glycerol.
Purification	Affinity Purification

Application

Dilution Ratio	WB 1:500-1:1000,IP 1:10-1:20
Molecular Weight	Calculated MW: 86 kDa; Observed MW: 86 kDa

Antigen Information

Gene Name	Integrin beta 6
Alternative Names	A11H; Integrin beta-6
Gene ID	3694.0
SwissProt ID	P18564
Immunogen	A synthetic peptide of human ITGB6

Background

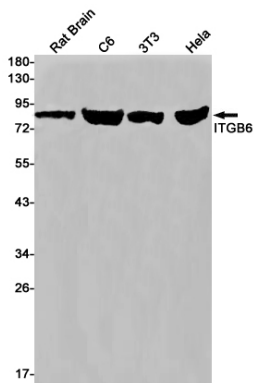
This gene encodes a protein that is a member of the integrin superfamily. Members of this family are adhesion receptors that function in signaling from the extracellular matrix to the cell. Integrins are heterodimeric integral membrane proteins composed of an alpha chain and a beta chain. The encoded protein forms a dimer with an alpha v chain and this heterodimer

can bind to ligands like fibronectin and transforming growth factor beta 1. Alternate splicing results in multiple transcript variants.

Research Area

PI3K-Akt signaling pathway

Image Data



Western blot analysis of ITGB6 in rat Brain, C6, 3T3, HeLa lysates using Integrin beta 6 antibody.