
Product Name: Inhibin beta A Rabbit Monoclonal Antibody**Catalog #: AMRe85708**

For research use only.

Summary

Description	Recombinant rabbit monoclonal antibody
Host	Rabbit
Application	WB
Reactivity	Human,Rat,Hamster
Conjugation	Unconjugated
Modification	Unmodified
Isotype	IgG
Clonality	Monoclonal
Form	Liquid
Concentration	
Storage	Aliquot and store at -20°C (valid for 12 months). Avoid freeze/thaw cycles.
Shipping	Ice bags
Buffer	Purified antibody in TBS with 0.05% sodium azide,0.05%protective protein and 50% glycerol.
Purification	Affinity Purification

Application

Dilution Ratio	WB 1:500-1:1000
Molecular Weight	Calculated MW: 47 kDa; Observed MW: 44 kDa

Antigen Information

Gene Name	Inhibin beta A
Alternative Names	INHBA; Inhibin beta A chain; Activin beta-A chain; Erythroid differentiation protein; EDF
Gene ID	3624.0
SwissProt ID	P08476
Immunogen	A synthetic peptide of human Inhibin beta A

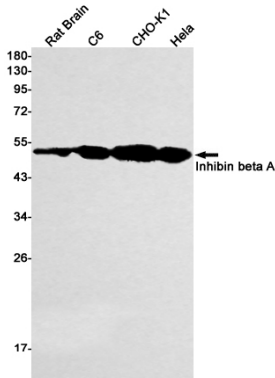
Background

Inhibins and activins inhibit and activate, respectively, the secretion of follitropin by the pituitary gland. Inhibins/activins are involved in regulating a number of diverse functions such as hypothalamic and pituitary hormone secretion, gonadal hormone secretion, germ cell development and maturation, erythroid differentiation, insulin secretion, nerve cell survival, embryonic

axial development or bone growth, depending on their subunit composition.

Research Area

Image Data



Western blot analysis of Inhibin beta A in rat Brain, C6, CHO-K1, HeLa lysates using Inhibin beta A antibody.