
Product Name: IGFBP7 Rabbit Monoclonal Antibody**Catalog #: AMRe85696**

For research use only.

Summary

Description	Recombinant rabbit monoclonal antibody
Host	Rabbit
Application	WB,IHC,ICC
Reactivity	Human,Mouse,Rat
Conjugation	Unconjugated
Modification	Unmodified
Isotype	IgG
Clonality	Monoclonal
Form	Liquid
Concentration	
Storage	Aliquot and store at -20°C (valid for 12 months). Avoid freeze/thaw cycles.
Shipping	Ice bags
Buffer	Purified antibody in TBS with 0.05% sodium azide,0.05%protective protein and 50% glycerol.
Purification	Affinity Purification

Application

Dilution Ratio	WB 1:500-1:1000,IHC 1:50-1:100,ICC 1:50-1:200
Molecular Weight	Calculated MW: 29 kDa; Observed MW: 29 kDa

Antigen Information

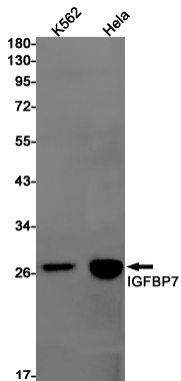
Gene Name	IGFBP7 IGFBP7; MAC25; PSF; Insulin-like growth factor-binding protein 7; IBP-7; IGF-binding protein
Alternative Names	7; IGFBP-7; IGFBP-rP1; MAC25 protein; PGI2-stimulating factor; Prostacyclin-stimulating factor; Tumor-derived adhesion factor; TAF
Gene ID	3490.0
SwissProt ID	Q16270
Immunogen	A synthetic peptide of human IGFBP7

Background

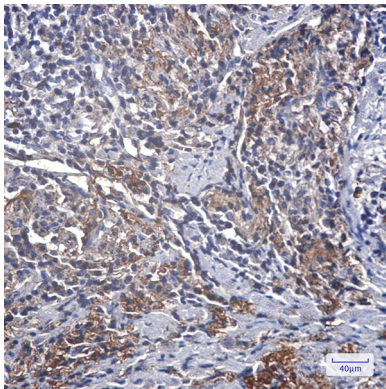
Binds IGF-I and IGF-II with a relatively low affinity. Stimulates prostacyclin (PGI₂) production. Stimulates cell adhesion.

Research Area

Image Data



Western blot analysis of IGFBP7 in K562, HeLa lysates using IGFBP7 antibody.



Immunohistochemistry analysis of paraffin-embedded Human lung cancer using IGFBP7 antibody. High-pressure and temperature Sodium Citrate pH 6.0 was used for antigen retrieval.