
Product Name: IGFBP1 Rabbit Monoclonal Antibody**Catalog #: AMRe85693**

For research use only.

Summary

Description	Recombinant rabbit monoclonal antibody
Host	Rabbit
Application	WB
Reactivity	Human
Conjugation	Unconjugated
Modification	Unmodified
Isotype	IgG
Clonality	Monoclonal
Form	Liquid
Concentration	
Storage	Aliquot and store at -20°C (valid for 12 months). Avoid freeze/thaw cycles.
Shipping	Ice bags
Buffer	Purified antibody in TBS with 0.05% sodium azide, 0.05% protective protein and 50% glycerol.
Purification	Affinity Purification

Application

Dilution Ratio	WB 1:500-1:1000
Molecular Weight	Calculated MW: 28 kDa; Observed MW: 28 kDa

Antigen Information

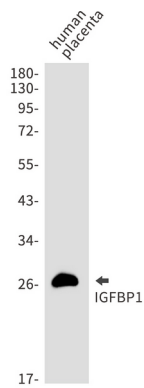
Gene Name	IGFBP1
Alternative Names	IGFBP1; IBP1; Insulin-like growth factor-binding protein 1; IBP-1; IGF-binding protein 1; IGFBP-1; Placental protein 12; PP12
Gene ID	3484.0
SwissProt ID	P08833
Immunogen	A synthetic peptide of human IGFBP1

Background

IGF-binding proteins prolong the half-life of the IGFs and have been shown to either inhibit or stimulate the growth promoting effects of the IGFs on cell culture. They alter the interaction of IGFs with their cell surface receptors. Promotes cell migration.

Research Area

Image Data



Western blot analysis of IGFBP1 in Human placenta lysates using IGFBP1 antibody.