

---

**Product Name: IFT88 Rabbit Monoclonal Antibody****Catalog #: AMRe85691**

For research use only.

**Summary**

<b>Description</b>	Recombinant rabbit monoclonal antibody
<b>Host</b>	Rabbit
<b>Application</b>	WB
<b>Reactivity</b>	Human,Mouse,Rat
<b>Conjugation</b>	Unconjugated
<b>Modification</b>	Unmodified
<b>Isotype</b>	IgG
<b>Clonality</b>	Monoclonal
<b>Form</b>	Liquid
<b>Concentration</b>	
<b>Storage</b>	Aliquot and store at -20°C (valid for 12 months). Avoid freeze/thaw cycles.
<b>Shipping</b>	Ice bags
<b>Buffer</b>	Purified antibody in TBS with 0.05% sodium azide,0.05%protective protein and 50% glycerol.
<b>Purification</b>	Affinity Purification

**Application**

<b>Dilution Ratio</b>	WB 1:500-1:1000
<b>Molecular Weight</b>	Calculated MW: 93 kDa; Observed MW: 93 kDa

**Antigen Information**

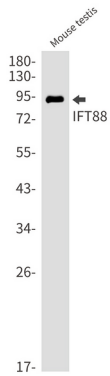
<b>Gene Name</b>	IFT88
<b>Alternative Names</b>	Recessive polycystic kidney disease protein Tg737 homolog; Tetratricopeptide repeat protein 10; TPR repeat protein 10
<b>Gene ID</b>	8100.0
<b>SwissProt ID</b>	Q13099
<b>Immunogen</b>	A synthetic peptide of human IFT88

**Background**

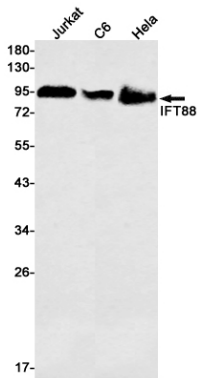
Involved in primary cilium biogenesis. Also involved in autophagy since it is required for trafficking of ATG16L and the expansion of the autophagic compartment.

## Research Area

## Image Data



Western blot analysis of IFT88 in mouse testis lysates using IFT88 antibody.



Western blot analysis of IFT88 in Jurkat, C6, HeLa lysates using IFT88 antibody.