

Summary

Production Name	IDH2 Rabbit Monoclonal Antibody
Description	Rabbit Monoclonal antibody
Host	Rabbit
Application	WB,IHC
Reactivity	Human,Mouse,Rat

Performance

Conjugation	Unconjugated
Modification	Unmodified
Isotype	IgG
Clonality	Monoclonal
Form	Liquid
Storage	Store at 4°C short term. Aliquot and store at -20°C long term. Avoid freeze/thaw cycles.
Buffer	Purified antibody in TBS with 0.05% sodium azide,0.05%protective protein and 50% glycerol.
Purification	Affinity Purification

Immunogen

Gene Name	IDH2
Alternative Names	IDH; IDP; IDHM; IDPM; ICD-M; D2HGA2; mNADP-IDH
Gene ID	3418.0
SwissProt ID	P48735.A synthetic peptide of human IDH2

Application

Dilution Ratio	WB:1:500-1:1000,IHC:1:50-1:100
Molecular Weight	Calculated MW: 51 kDa; Observed MW: 43 kDa

Background

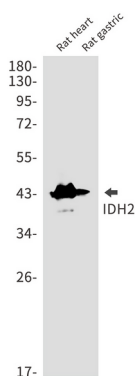
Product Name: IDH2 Rabbit Monoclonal Antibody
Catalog #: AMRe85688



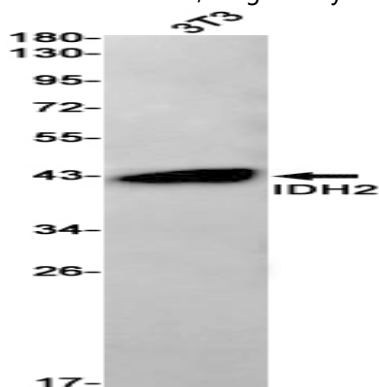
Plays a role in intermediary metabolism and energy production. It may tightly associate or interact with the pyruvate dehydrogenase complex.

Research Area

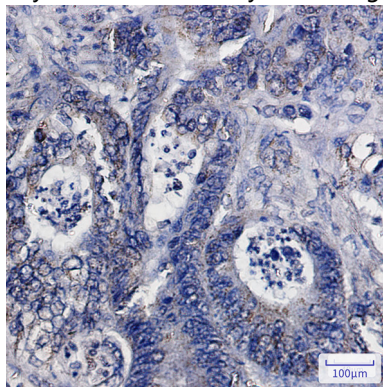
Image Data



Western blot analysis of IDH2 in rat heart, rat gastric lysates using IDH2 antibody.



Western blot analysis of IDH2 in 3T3 lysates using IDH2 antibody.



Immunohistochemistry analysis of paraffin-embedded Human colon cancer using IDH2 antibody. High-pressure and temperature Sodium Citrate pH 6.0 was used for antigen retrieval.

Product Name: IDH2 Rabbit Monoclonal Antibody
Catalog #: AMRe85688



Note

For research use only.