

**Product Name: HtrA2 Rabbit Monoclonal Antibody**  
**Catalog #: AMRe85683**



## Summary

<b>Production Name</b>	HtrA2 Rabbit Monoclonal Antibody
<b>Description</b>	Rabbit Monoclonal antibody
<b>Host</b>	Rabbit
<b>Application</b>	WB,IP,IHC,ICC
<b>Reactivity</b>	Human,Mouse

## Performance

<b>Conjugation</b>	Unconjugated
<b>Modification</b>	Unmodified
<b>Isotype</b>	IgG
<b>Clonality</b>	Monoclonal
<b>Form</b>	Liquid
<b>Storage</b>	Store at 4°C short term. Aliquot and store at -20°C long term. Avoid freeze/thaw cycles.
<b>Buffer</b>	Purified antibody in TBS with 0.05% sodium azide,0.05%BSA and 50% glycerol.
<b>Purification</b>	Affinity Purification

## Immunogen

<b>Gene Name</b>	HtrA2 High temperature requirement protein A2; HTRA 2; HtrA like serine protease; HtrA serine peptidase 2; HtrA; E. coli; homolog of; 2; HtrA2; HTRA2_HUMAN; mitochondrial; Omi stress regulated endoprotease; Omi stress-regulated endoprotease; PARK 13;
<b>Alternative Names</b>	PARK13; Protease serine 25; PRSS 25; PRSS25; Serine protease 25; Serine protease HTRA2; Serine protease HTRA2 mitochondrial; Serine protease htra2 mitochondrial precursor; Serine protease omi; Serine proteinase OMI.
<b>Gene ID</b>	27429.0
<b>SwissProt ID</b>	O43464. A synthetic peptide of human HtrA2/Omi

## Application

<b>Dilution Ratio</b>	WB:1:500-1:1000,IP:1:10-1:20,IHC:1:50-1:100,ICC:1:50-1:200
<b>Molecular Weight</b>	Calculated MW: 49 kDa; Observed MW: 36 kDa

**Product Name: HtrA2 Rabbit Monoclonal Antibody**  
**Catalog #: AMRe85683**

---



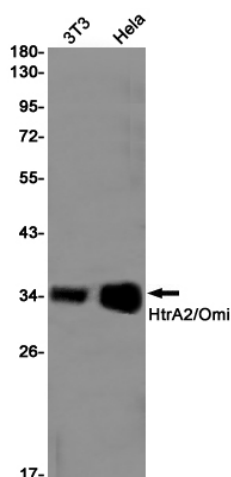
## Background

High temperature requirement protein A2 (HtrA2)/Omi is a serine protease with homology to the E. coli HtrA protein (DegP) and is thought to be involved in apoptosis and stress-induced degradation of misfolded proteins. While HtrA2 was originally identified to be present in either the nucleus or endoplasmic reticulum, subsequent studies have shown that it localizes in mitochondria and is released during apoptosis.

## Research Area

Apoptosis

## Image Data



Western blot analysis of HtrA2/Omi in 3T3, HeLa lysates using HtrA2 antibody.

## Note

For research use only.