

## Summary

<b>Production Name</b>	Hsp60 Rabbit Monoclonal Antibody
<b>Description</b>	Rabbit Monoclonal antibody
<b>Host</b>	Rabbit
<b>Application</b>	WB,IP,IHC,ICC
<b>Reactivity</b>	Mouse,Rat

## Performance

<b>Conjugation</b>	Unconjugated
<b>Modification</b>	Unmodified
<b>Isotype</b>	IgG
<b>Clonality</b>	Monoclonal
<b>Form</b>	Liquid
<b>Storage</b>	Store at 4°C short term. Aliquot and store at -20°C long term. Avoid freeze/thaw cycles.
<b>Buffer</b>	Purified antibody in TBS with 0.05% sodium azide,0.05%BSA and 50% glycerol.
<b>Purification</b>	Affinity Purification

## Immunogen

<b>Gene Name</b>	Hsp60 HSPD1; HSP60; 60 kDa heat shock protein; mitochondrial; 60 kDa chaperonin;
<b>Alternative Names</b>	Chaperonin 60; CPN60; Heat shock protein 60; HSP-60; Hsp60; HuCHA60; Mitochondrial matrix protein P1; P60 lymphocyte protein
<b>Gene ID</b>	3329.0
<b>SwissProt ID</b>	P10809. Recombinant protein of human Hsp60

## Application

<b>Dilution Ratio</b>	WB:1:500-1:1000,IP:1:10-1:20,IHC:1:50-1:100,ICC:1:50-1:200
<b>Molecular Weight</b>	Calculated MW: 61 kDa; Observed MW: 61 kDa

## Background

**Product Name: Hsp60 Rabbit Monoclonal Antibody**  
**Catalog #: AMRe85680**

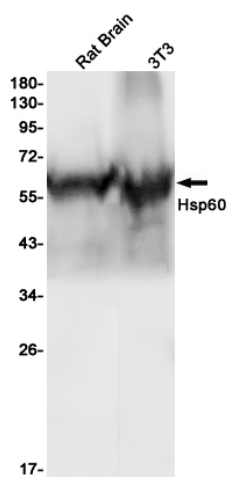
---



HSP60 Implicated in mitochondrial protein import and macromolecular assembly. May facilitate the correct folding of imported proteins. May also prevent misfolding and promote the refolding and proper assembly of unfolded polypeptides generated under stress conditions in the mitochondrial matrix. Belongs to the chaperonin (HSP60) family. Interacts with HBV protein X and HTLV-1 protein p40tax.

## Research Area

## Image Data



Western blot analysis of Hsp60 in rat Brain, 3T3 lysates using Hsp60 antibody.

## Note

For research use only.